

Hotel Electronic Lock



ASL411S/ASL411S-D

ASL412S/ASL412S-D

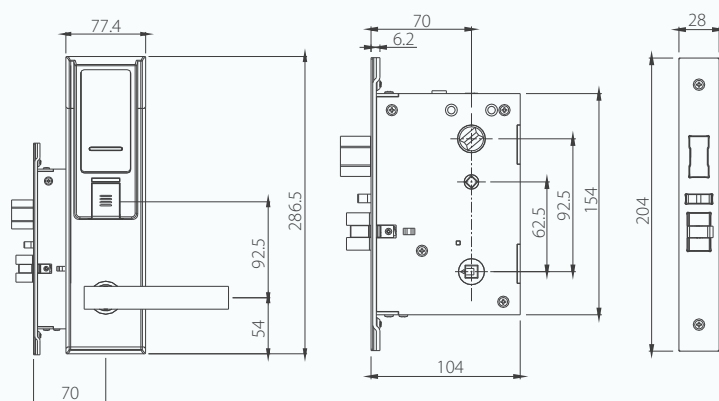


Features

- Stainless steel panels and handles, sturdy and durable
- RF card
- Spare mechanical keys solve any emergency
- Lock failure / Low voltage alarm
- The handle turns freely when access is not authorized
- Multi-management
- Wireless installation

Technical Specifications

Model	ASL411S	ASL411S-D
Card Technology	Mifare1 card	T5557 card
Working voltage	DC6V, alkaline battery (4 pcs)	
Power Consumption	Static<20uA, Dynamic<200uA	
Working Environment	-30~+60 C, 10%~80% RH	
Lock case	SUS304 Stainless steel	
Door thickness	35mm above	
Package size	375X210X140mm	
Weight	2.7Kg	

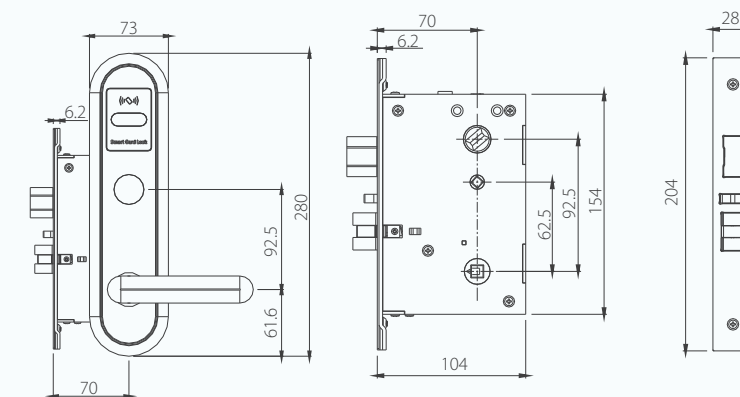


Features

- Stainless steel panels and handles, sturdy and durable
- RF card
- Spare mechanical keys solve any emergency
- Lock failure / Low voltage alarm
- The handle turns freely when access is not authorized
- Multi-management
- Wireless installation

Technical Specifications

Model	ASL412S	ASL412S-D
Card Technology	Mifare1 card	T5557 card
Working voltage	DC6V, alkaline battery (4 pcs)	
Power Consumption	Static<20uA, Dynamic<200uA	
Working Environment	-30~+60 C, 10%~80% RH	
Lock case	SUS304 Stainless steel	
Door thickness	35mm above	
Mechanical Key	Support	
Package size	375X210X140mm	
Weight	2.7Kg	





ASL413S/ASL413S-D

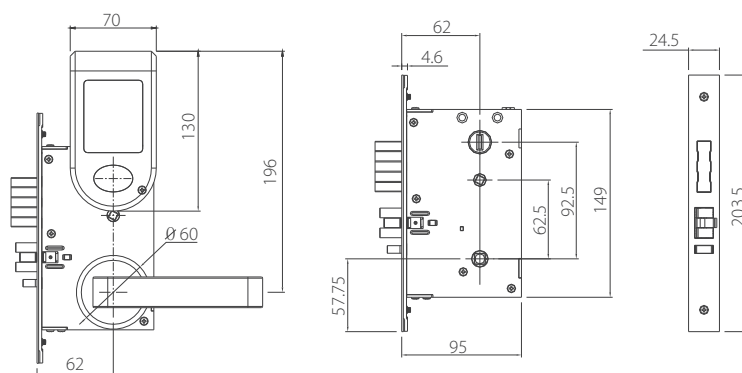


Features

- Stainless steel panels and handles, sturdy and durable
- RF card
- Spare mechanical keys solve any emergency
- Lock failure / Low voltage alarm
- The handle turns freely when access is not authorized
- Multi-management
- Wireless installation

Technical Specifications

Model	ASL413S	ASL413S-D
Card Technology	Mifare1 card	T5557 card
Working voltage	DC6V, alkaline battery (4 pcs)	
Power Consumption	Static<20uA, Dynamic<200uA	
Working Environment	-30~+60 C, 10%~80% RH	
Lock case	SUS304 Stainless steel	
Door thickness	35mm above	
Mechanical Key	Support	
Package size	375X210X140mm	
Weight	2.72Kg	



* Design and specifications are subject to change without notice.

Hotel Electronic Lock-01, Sep 2015



DAHUA TECHNOLOGY CO., LTD.

No.1199 Bin'an Road, Binjiang District, Hangzhou, China. 310053

Tel: +86-571-87688883 Fax: +86-571-87688815

Email: overseas@dahuatech.com

www.dahuasecurity.com



© Dahua Technology, All rights reserved