

Device Initialization and Password Reset for Storage Devices

Quick-Start Guide by Dahua Technology



Release 2.0

Table of Contents

1	Introduction	2
2	Device Initialization	2
2.1	Using Storage Device Menu	2
2.1.1	Initializing Current Device	2
2.1.2	Initializing Remote Devices	4
2.2	Using ConfigTool	7
2.3	Using SmartPSS	10
3	Password Reset	11
4	About This Document	14
5	Application Scope.....	14

Device Initialization and Password Reset

1 Introduction

In order to strengthen device security and ensure the safety of user information, new firmware on Dahua devices will feature initialization and password reset functions. When using the device for the first time, there is no longer a default password, and users will need to initialize the device with a strong password. Users who have forgotten their password can reset it through email verification or answering security questions (security questions are valid for NVR/DVR devices only).

2 Device Initialization

When using a Dahua device for the first time, you are required to set a login password for the admin account (system default user).

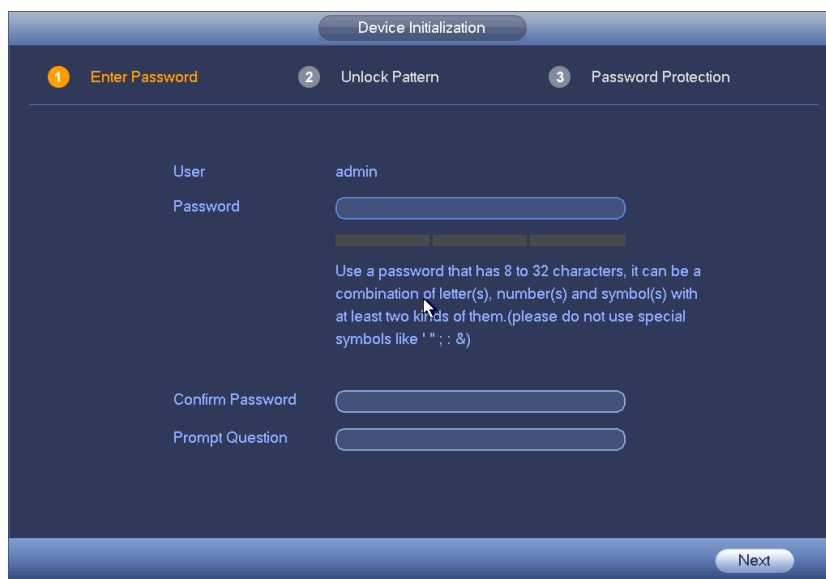
Note: To ensure the safety of your device, please store your admin login password in a safe place, and change the password regularly.

2.1 Using Storage Device Menu

2.1.1 Initializing Current Device

Instructions (**NVR** menu is used in this example)

Step 1 First power on your NVR. The device should boot into the device initialization interface.



Device Initialization

1 Enter Password 2 Unlock Pattern 3 Password Protection

User: admin

Password:

Confirm Password:

Prompt Question:


Use a password that has 8 to 32 characters, it can be a combination of letter(s), number(s) and symbol(s) with at least two kinds of them. (please do not use special symbols like ' ; : &)

Next

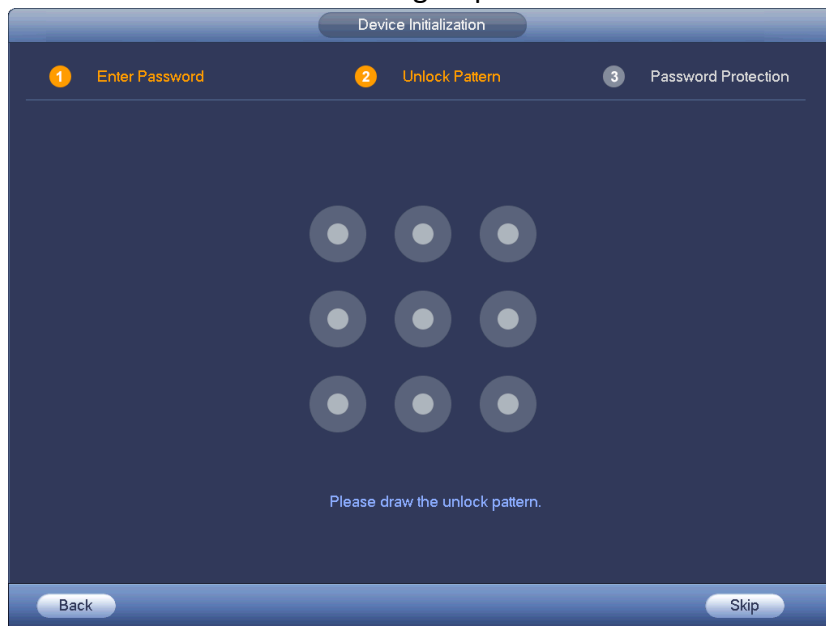
Step 2 Configure the **admin** login password.

- User name: The default user name is **admin**.
- Password/Confirm password: Passwords must have 8 to 32 characters.

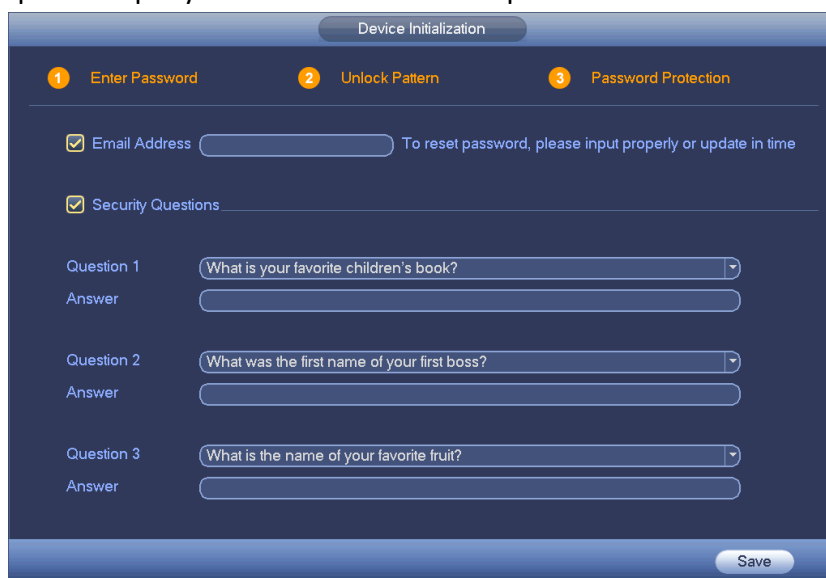
It can contain letters, numbers and special characters (excluding “ ” , “ ” , “ ; ” , “ : ” , “ & ”). The password must contain at least two of the above types. We recommend choosing a strong password.

- Prompt question: The prompt question can be used to remind you of your password, and is accessible from the login screen by clicking the  icon.

Step 3 Click “Next” and the following step will be shown.



Step 4 Draw and set an unlock pattern to provide enhanced security. You may skip this step if you do not want to set a pattern lock.



Step 5 Configure password security information. Your email and/or security questions can be used to reset the admin password.

- Email: Enter an email address to be used when resetting your password. When resetting a password with your email, a security code will be sent

in an email to your account, which can be input on the password reset prompt.

- Security questions: Security questions can also be used to reset your password.

Note: You may configure or update your email address or security questions by going to the Main Menu->Settings->System->Account.

Step 6 Click OK to complete the device initialization setup. The device will then show the startup wizard interface.

2.1.2 Initializing Remote Devices

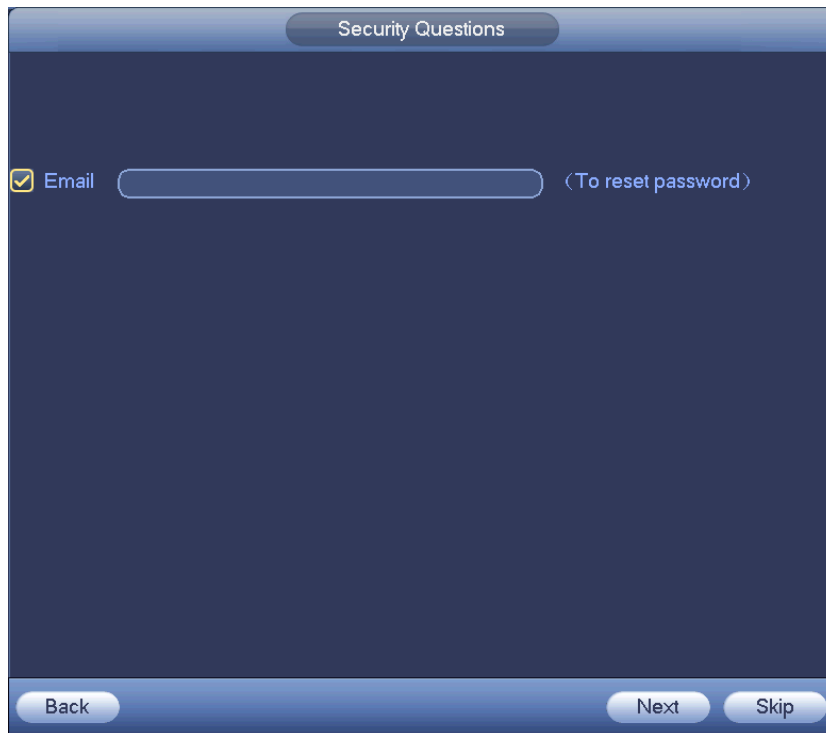
Recorders support the initialization of remote devices including networked cameras. You can use the recorder's device search feature to find uninitialized device(s) on the same LAN and then initialize them.

Step 1 Open the registration interface from main menu-> Settings->Camera->Registration.



Step 2 Select uninitialized device(s) and then click Initialize. The password settings interface will be shown.

Step 4 Click Next and the email input interface will be shown.

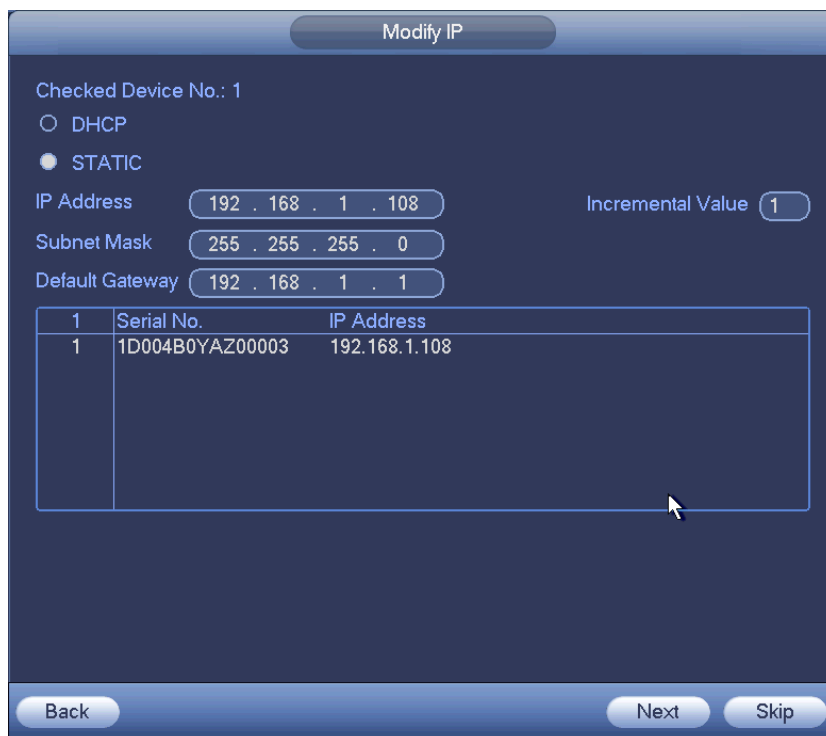


The screenshot shows a 'Security Questions' window. At the top, there is a title bar with the text 'Security Questions'. Below the title bar, there is a checked checkbox labeled 'Email' followed by an empty text input field and the text '(To reset password)'. At the bottom of the window, there are three buttons: 'Back', 'Next', and 'Skip'.

Step 5 Set email information.

- Email: Enter an email address to be used when resetting your password. When resetting a password with your email, a security code will be sent in an email to your account, which can be input on the password reset prompt.

Step 6 Click Next to open the IP address config interface.



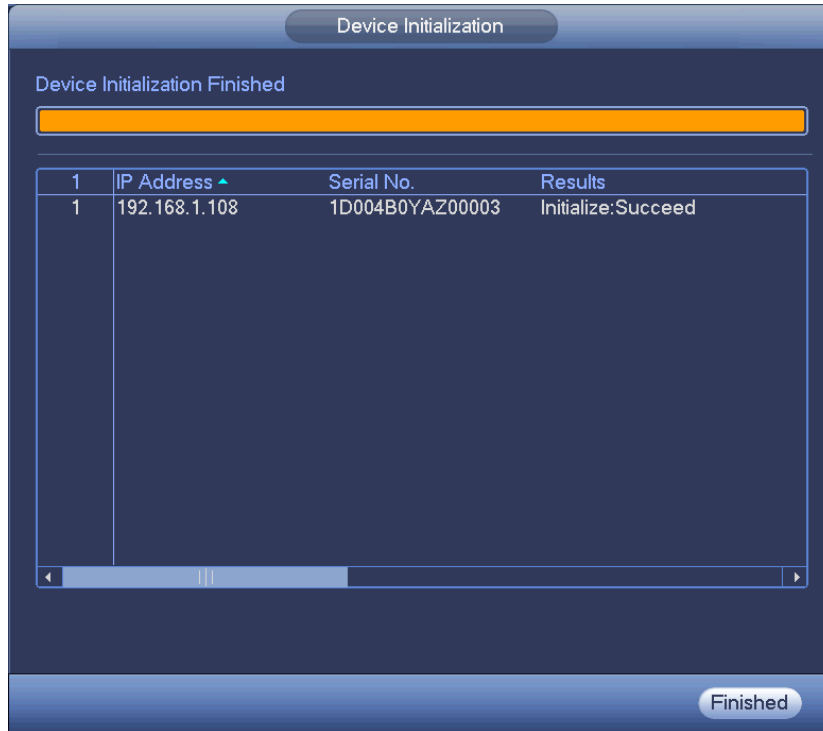
The screenshot shows a 'Modify IP' window. At the top, there is a title bar with the text 'Modify IP'. Below the title bar, there is a section 'Checked Device No.: 1' with two radio buttons: 'DHCP' (unselected) and 'STATIC' (selected). Below this, there are three input fields: 'IP Address' with the value '192 . 168 . 1 . 108', 'Subnet Mask' with the value '255 . 255 . 255 . 0', and 'Default Gateway' with the value '192 . 168 . 1 . 1'. To the right of the IP Address field is an 'Incremental Value' field with the value '1'. Below these fields is a table with two columns: 'Serial No.' and 'IP Address'. The table has one row with the values '1D004B0YAZ00003' and '192.168.1.108'. At the bottom of the window, there are three buttons: 'Back', 'Next', and 'Skip'.

	Serial No.	IP Address
1	1D004B0YAZ00003	192.168.1.108

Step 7 Set IP address for remote device(s)

- Check DHCP: There is no need to input IP address, subnet mask, and default gateway. Device automatically allocates the IP address to the camera(s).
- Check Static: Input IP address, subnet mask, default gateway and incremental value.

Step 8 Click Next and the recorder will begin initializing the remote device(s).




Step 9 Click Finish to complete the setup.

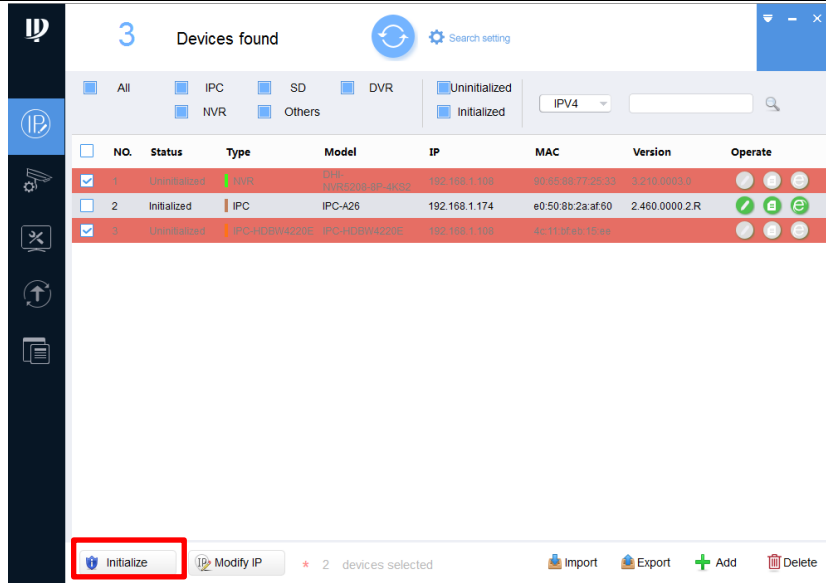
2.2 Using ConfigTool

ConfigTool allows you to initialize remote devices over the same LAN, and supports initializing multiple devices at the same time.

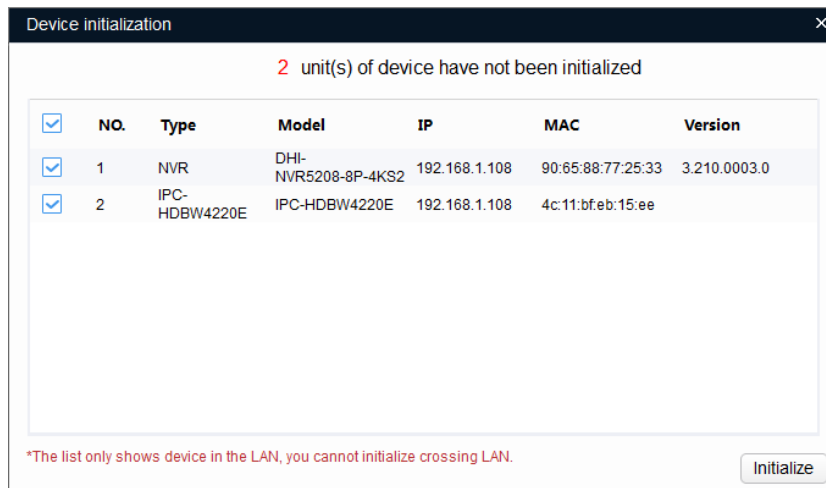
Instructions:

Step 10 Double click the  on the desktop and enter the main interface.

Step 11 Click the  to enter the IP configuration screen.



Step 12 Select an uninitialized device and then click Initialize . Enter the device initializing interface.



Step 13 Select devices to initialize, and then click “Initialize”.

Device initialization ✕

2 unit(s) of device have not been initialized

Username

New Password

Weak
 Medium
 Strong

Confirm Password

The password shall be 8-32 digits. It is a combination of number(s),letter(s),symbol(s) with at least two kinds of them.



Email Address (for password reset)

*After you have set new password, please set password again in Search Setup.

Note: For different series products, the user interface may have slight variations. When initializing several devices at the same time, the system only displays the initialization interface once.



Step 14 Set device initialization parameters.

Step 15 Click “Initialize”, system begins initializing the device. After initialization, the interface is shown as below.

- If initialization was successful, a  icon will be shown in front of the device name.
- If initialization failed, a  icon will be shown before the device name.

Initialization ✕

2 unit(s) of device have been activated!

NO.	Type	Model	IP	MAC	Version
1	 NVR	DHI-NVR5208-8P-4KS2	192.168.1.108	90:65:88:77:25:33	3.210.0003.0
2	 IPC-HDBW4220E	IPC-HDBW4220E	192.168.1.108	4c:11:bf:eb:15:ee	

Step 16 Click Finish to complete device initialization. After initialization, the status for each initialized device on the ConfigTool should now show “Initialized”.

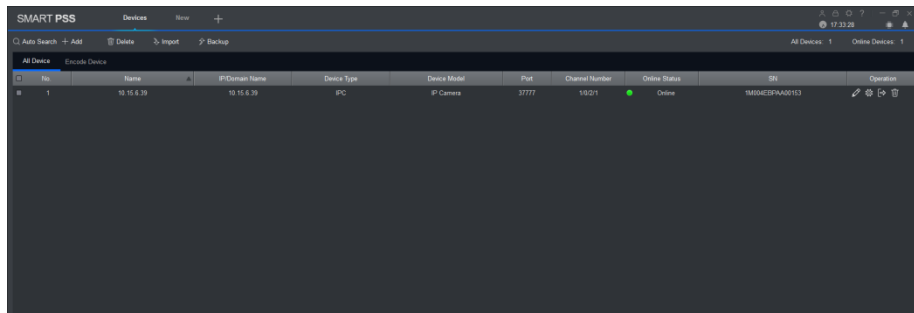
2.3 Using SmartPSS

SmartPSS allows you to initialize remote devices over the same LAN, and supports initializing multiple devices at the same time.

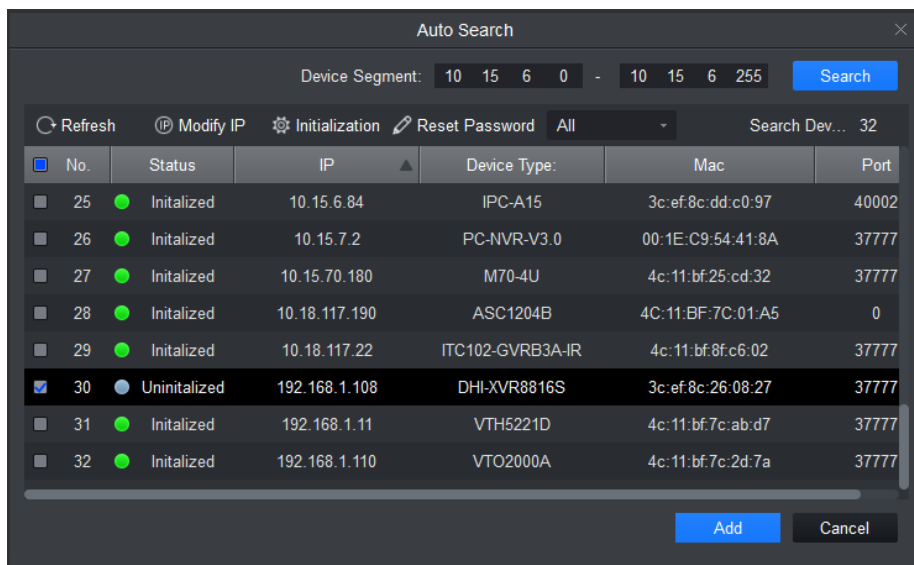
Instructions:

Step 1 Open and login to SmartPSS.

Step 2 On the new function interface (by clicking **+** button at the top of the interface), click Device manager to open the Device Manager Interface.



Step 3 Click Auto search.



Step 4 Select a device to initialize, and then click “Initialize” to enter the device initialization interface.

Initialize Device

1 Set Password 2 Set cryptoguard 3 Modify IP

User Name admin

Password

Password Strength

Confirm Password

Next Cancel

Step 5 Configure device initialization parameters (User Name, Password/Confirm Password, Email).

Step 6 Click “Initialize”, and the system will configure the device. After initialization is complete, results will be displayed as shown below.

Initialize Device

Initialized device finish!

100%

No.	SN:		IP	Result
1	2M047B0PAMN9G3Z	✓	192.168.1.108	Succeed

Finish

3 Password Reset

If you forget the admin password, you can reset it through email verification or answering security questions.


Note: A password reset may only be performed for the **admin** account.

Instructions (NVR menu is used in this example)

Step 1 Open the device login screen.

- If you have set an unlock pattern, the device will first ask you to enter the pattern. Click “Forgot Unlock Pattern”, and the device will display the password login interface.
- If you have not set an unlock pattern, the device directly displays the password interface.



Step 2 Click  to enter the password reset interface. If you have linked an email to your admin account, the device will allow you to perform a password reset.

Step 3 Reset login password.

There are two ways to reset your password: Scan a QR code and reset by email, or by answering security questions (which is valid on local menu only).

- Email: Follow the prompts on the interface to scan the QR code, and then input the security code you received via email.

Note: The security code sent to your email is only valid for 24 hours.

Please make sure to scan the entire QR code and wait patiently for your phone to read it. We recommend using apps such as [Easy4ip](#), [QR code Barcode Scanner](#), [QR Code Reader](#) to scan the code.



Reset the password

Reset Type: QR Code

SN: DVRP2P00ZLY0001

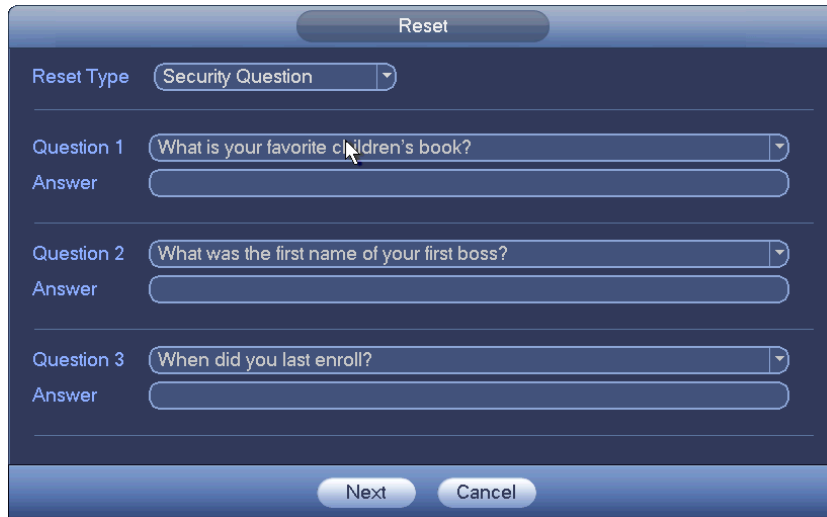
Note(For admin only):
Option 1. Please download Easy4ip and then from Me-Settings-Reset device password, scan the left QR code.
Option 2. Please use an APP to scan the left QR code to get special strings. And then send the strings to support_rpwd@global.dahuatech.com.

The security code will be delivered to l***@dahuatech.com.

Security code:

Cancel Next

- Security questions: Select “Security Question” from the “Reset Type” dropdown list at the top to select and answer security questions.



Reset

Reset Type: Security Question

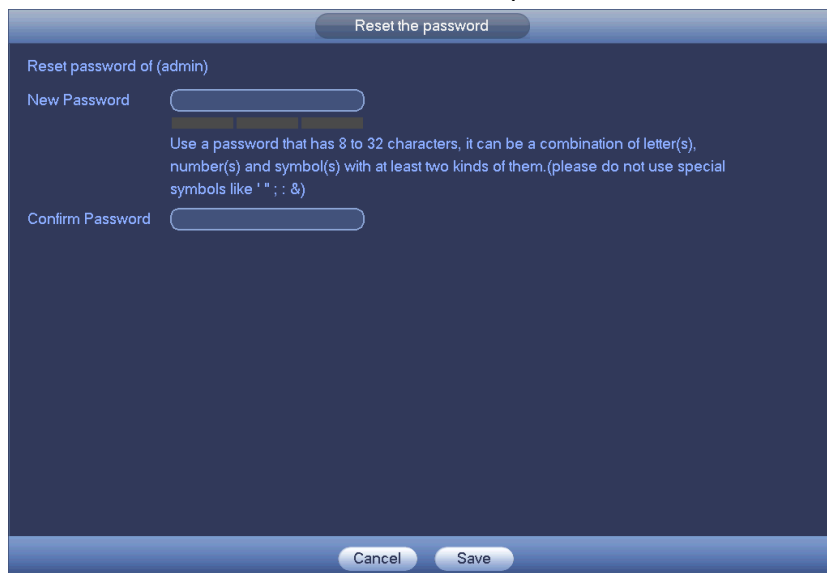
Question 1: What is your favorite children's book?
Answer:

Question 2: What was the first name of your first boss?
Answer:

Question 3: When did you last enroll?
Answer:

Next Cancel

Step 4 Click “Next” to advance to the reset password interface.



Reset the password

Reset password of (admin)

New Password:

Use a password that has 8 to 32 characters, it can be a combination of letter(s), number(s) and symbol(s) with at least two kinds of them.(please do not use special symbols like ' " ; : &)

Confirm Password:

Cancel Save

Step 5 Input your new password and then confirm.

Step 6 Click OK to complete the setup.

4 About This Document

Some product functionality may vary before and after revision. This document is for reference only. Please refer to the actual product and product manual for more details.

This document serves as a reference for multiple types of products; specific operations will not be enumerated. Please operate products according to their specifications.

In the case of technical inaccuracies or inconsistencies in regards to product functions or operations, Dahua shall have the right of final interpretation.

5 Application Scope

This guide is not product specific and can be applied to all related Dahua products. It was created to help users learn about new initialization and password reset features on Dahua network products.

Note: As of November, 2017, there are still two series of NVR (NVR 600 series, NVR Wi-Fi series) which don't support initialization and password reset. Cameras need be initialized through ConfigTool or SmartPSS before being added to the above two series of NVR.

In addition, we will release the firmware supporting initialization and password reset for NVR 600 series and NVR Wi-Fi series as soon as possible.

About Dahua Technology

Zhejiang Dahua Technology Co., Ltd. is a leading solution provider in the global video surveillance industry. With around 11,000 employees all over the world, Dahua solutions, products and services are used in over 160 countries and regions.

In 2016, Dahua was ranked 4th in “Security Top 50” by a&s International. Dahua is committed to providing the highest quality products with the latest technologies to enable end users to perform their business successfully. The company has more than 6,000 R&D engineers working on cutting-edge technologies in AI, IoT, Cloud, video, cyber security, and software reliability and other technologies.

Visit www.dahuasecurity.com to learn more.