



Dahua Essential Security Series Monitor

Built-in BNC Port

LMXX-L100/L200



Features

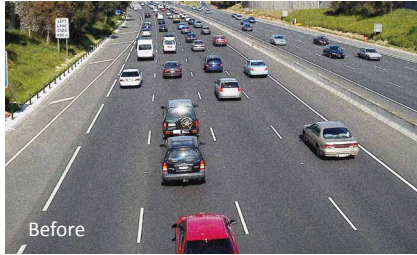
- 7x24h continuous work, suitable for every video surveillance and security application
- High fidelity digital processing, brilliant and vivid video
- Built in stereo speakers and audio amplifier
- Included desk stand is easily removable for standard VESA mounting
- Quadri-brid monitor LM22-L200 has a special BNC port to support HDCVI/AHD/ HDTV/ CVBS signal input



Dahua Essential Security Series Monitor

Features

- Built-in 3D noise reduction, clearer image

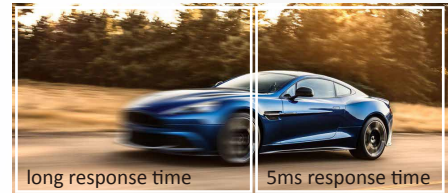


- High quality image

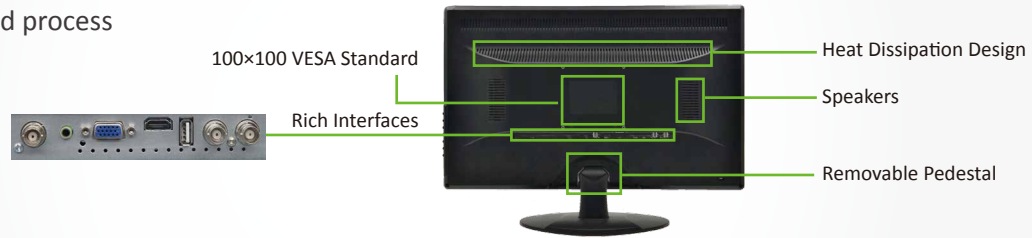
Vivid image, 16.7 Million colors



5ms fast response time, no ghosting



- Industrial design and process



- Quadri-brid application (LM22-L200 only, more models are on the way)



Product Specifications

Model	LM24-L200	LM22-L200	LM19-L100	LM18-L100	LM17-L100
Diagonal	23.8"(16:9)	21.5"(16:9)	19"(5:4)	18.5"(16:9)	17"(5:4)
Resolution	1920×1080	1920×1080	1280×1024	1366×768	1280×1024
Brightness	250cd/m ²	200cd/m ²	250cd/m ²	200cd/m ²	220cd/m ²
Contrast	1000:1	1000:1	1000:1	600:1	1000:1
Angle of view	178°/178°	170°/160°	178°/178°	178°/178°	160°/178°
Response time	5ms	5ms	5ms	5ms	5ms
Input	1 VGA, 1 HDMI 1 BNC, 1 Audio	1HD(support HDCVI, HDTVI, AHD, CVBS), 1 VGA, 1 HDMI1 BNC, 1 Audio	1 VGA, 1 HDMI 1 BNC, 1 Audio	1 VGA, 1 HDMI 1 BNC, 1 Audio	1 VGA, 1 HDMI 1 BNC, 1 Audio
Output	2 Speakers, 1 BNC	2 Speakers, 1 HD	2 Speakers	2 Speakers	2 Speakers

* Design and specifications are subject to change without notice.

Dahua Essential Security Series Monitor - 01, May 2017



DAHUA TECHNOLOGY

No.1199 Bin'an Road, Binjiang District, Hangzhou, China. 310053

Tel: +86-571-87688883 Fax: +86-571-87688815

Email: overseas@dahuatech.com

www.dahuasecurity.com



© Dahua Technology, All rights reserved