

Oil & Gas Solution

Safe Production/Efficient Operation



UK & IRELAND

CONTENTS

03-04	●	Solution Overview Challenge Solution Overview
05-09	●	Personnel Management TMAC Visitor Management Access Control AI Perimeter Auto Tracking Track Personnel High Risk Behaviour PPE Detection
10-13	●	Vehicle Management AI ANPR UVSS Block the Unwanted Vehicle Control Road Safety Unsafe Driving Prevent Oil Theft
14-19	●	Equipment Management Panoramic View Prevent Fire Accidents See Inaccessible Areas Predictive Maintenance Intelligent Identification Pipeline Intrusion Detection Ultra Long Range Detection Off-grid System
20-22	●	Sales Management Customer Insight AI Makes Payment Easier Smart Retail for BI Profitable Advertising
23-24	●	Case Studies
25	●	Key Products



OVERVIEW

CHALLENGE

In the oil and gas industry accidents tend to happen because of operational error, equipment failure or crime, which can cause loss of lives and problems for the economy.



Khuzestan, Iran May 6th, 2019

5 injured as fire engulfs two Iranian pipelines - the blaze occurred when the pipeline was under repair and a truck crashed into the pipeline spilling oil.



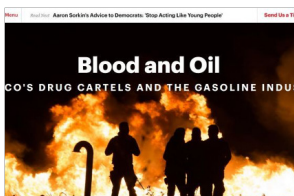
Niamey, Niger May 6th, 2019

55 dead 36 injured in oil tanker explosion - the truck crossed over the railway tracks as it left town and was hit by a train.



Sharon Springs, Kan. Dec 12th, 2016

5 injured (2 critically) after oil field explosion - workers were checking the gas when something caused the gas to leak and a spark ignited the gas.



Hidalgo, Mexico Jan 19th , 2019

89 dead in Mexico pipeline fire caused by fuel theft - the pipeline burst as a result of tampering by fuel thieves. The practice has cost the government billions of dollars over the years, with an estimated \$7.4 billion in stolen fuel since 2016.

SOLUTION OVERVIEW



Personnel Safety



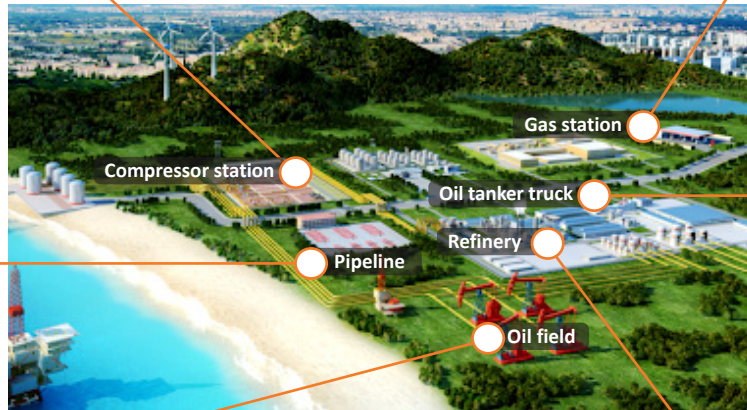
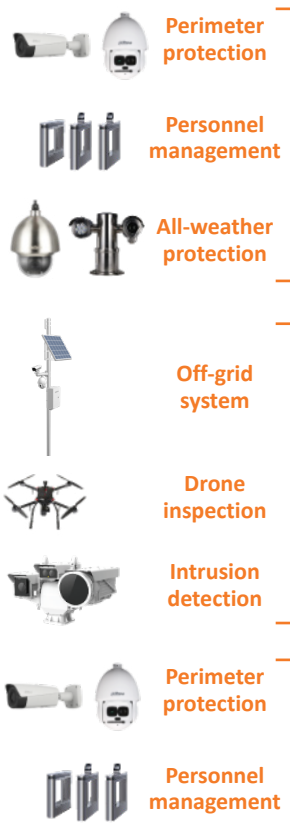
Vehicle Management



Equipment Protection

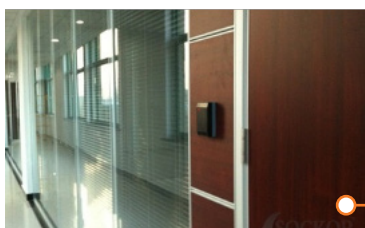


Sales Promotions





PERSONNEL MANAGEMENT



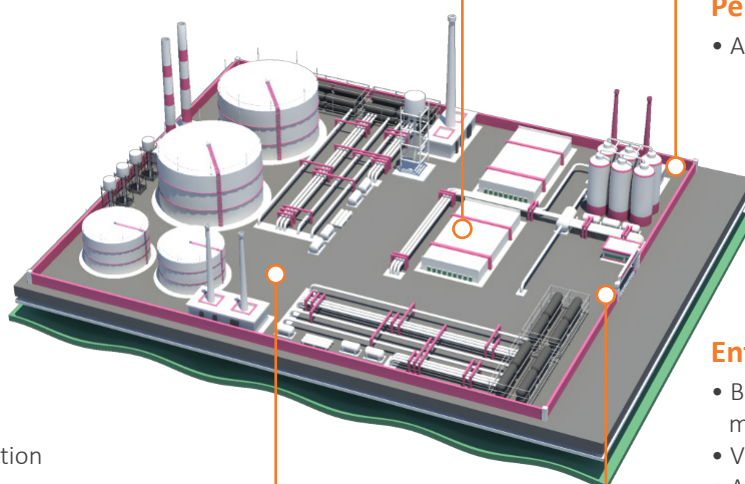
Workspace

- Access control
- Time attendance
- Lift control



Perimeter

- AI protection



Production Area

- Auto-tracking
- Personnel allocation
- High risk behaviour detection
- PPE detection



Entrance

- Body temperature monitoring
- Visitor management
- Access control



TMAC

Process

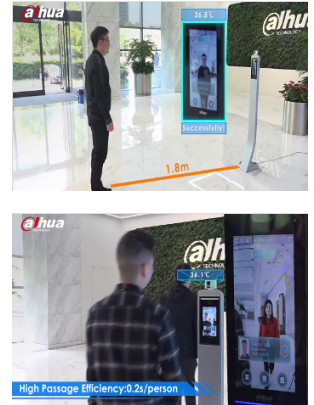
Entrance Area



Temperature Measurement Area



**Traditional
Handheld
Thermometer**



Value



Contactless

Non-contact access control
temperature monitoring
distance range: 0.3m - 0.8m



**High
Accuracy**

$\pm 0.3^{\circ}\text{C}$
(with blackbody)



**Quick
Response**

Face recognition time: 0.2s
Temperature monitoring
time: 0.2s



**Easy
Installation**

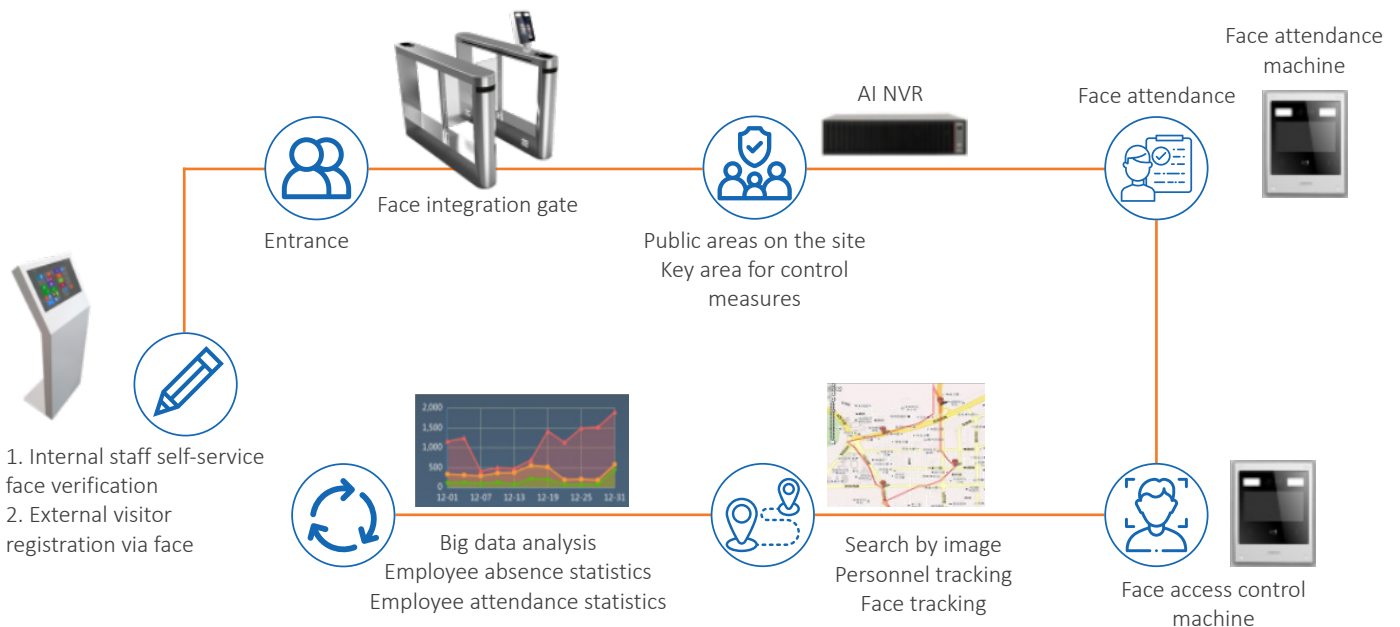
Easy to install and deploy



**Good
Compatibility**

TMAC terminal can be
integrated with third-party
devices

VISITOR MANAGEMENT



Problem

- Cannot search manual check-in records
- Hard to track visitors
- Cannot enter if forgotten ID cards
- Easy to copy cards

Values

- Doors open without needing a reception
- More secure than cards and fingerprints
- Eliminate counterfeiting



ACCESS CONTROL

Managing a wide variety of different access permissions.

01

Personnel Authority

Personnel can only operate in their own designated area and cannot enter restricted areas.

02

Lifts Control

Visitors are only able to exit lift on the floor of the person they are visiting and door won't open to other floors.

03

Locating Employees

Knowing where employees are at all times is critical. If an accident occurs, plant managers must know who was in the area at the time of the incident.

AI PERIMETER



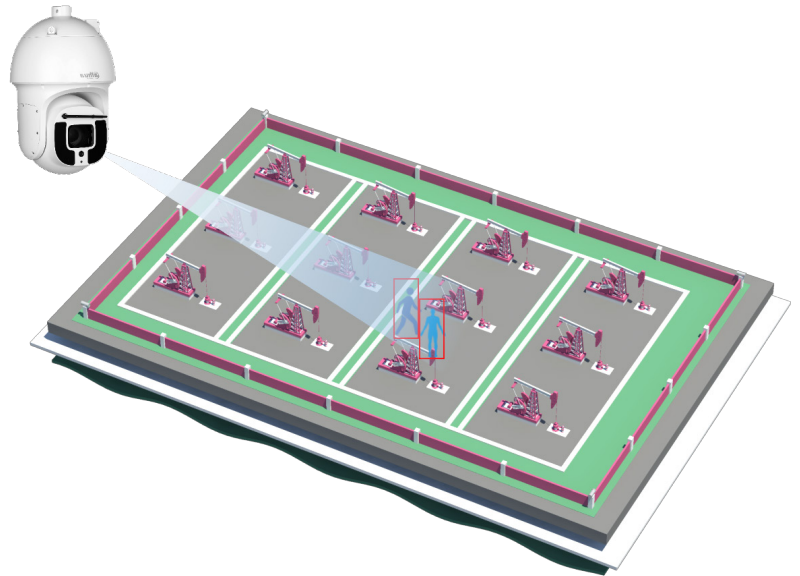
AUTO-TRACKING

Problems

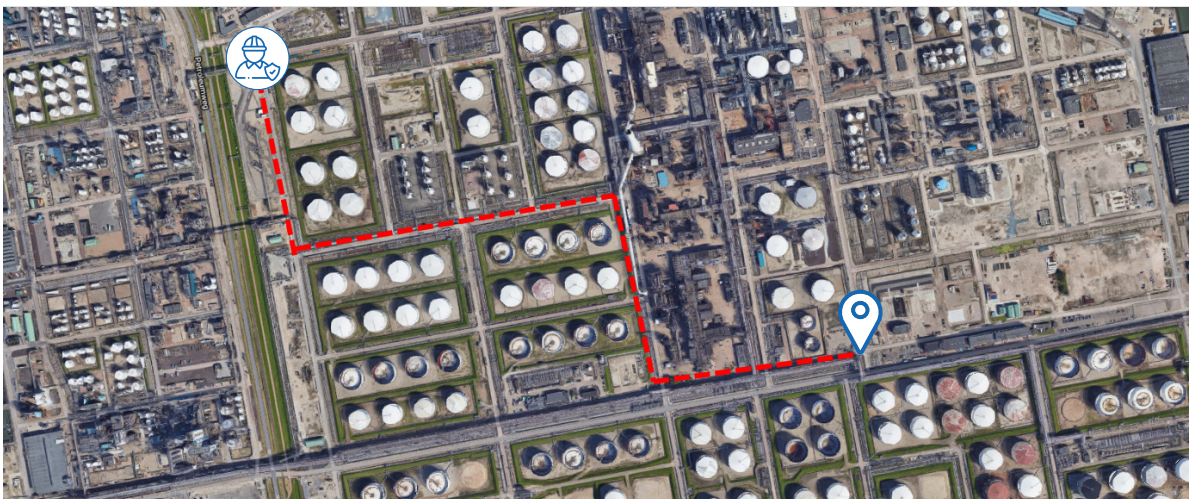
- Operational works are poorly monitored
- Workers enter high risky area around the pumping unit without notice
- Oil theft in low light conditions

Values

- Auto-tracking when people are detected
- Alarm when crossing over a boundary
- Starlight cameras guarantee perfect images at night



TRACK PERSONNEL



Blacklist/Whitelist/Stranger

One person is in charge of a certain area. If the person appears in another area, an alarm will go off to remind them.



Track Personnel

Track a person's route with the help of their personnel information and stored facial image.

HIGH RISK BEHAVIOUR



Smoking Detection

Smoking will easily cause fire so it should be strictly prohibited.



Call Detection

Making telephone calls will also trigger alarm.



Operation Control

The operation of the staff will be monitored to ensure that they follow standards.



Thermal Camera

PPE DETECTION

- Wearing proper PPE such as hardhats and long sleeve uniforms is required.
- You can also track historic recordings for PPE violations.



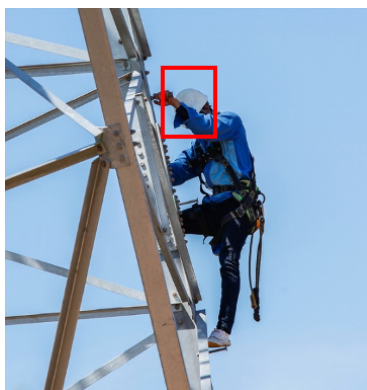
Hard Hat Detection



Long-sleeve Detection



Historic Tracking





VEHICLE MANAGEMENT

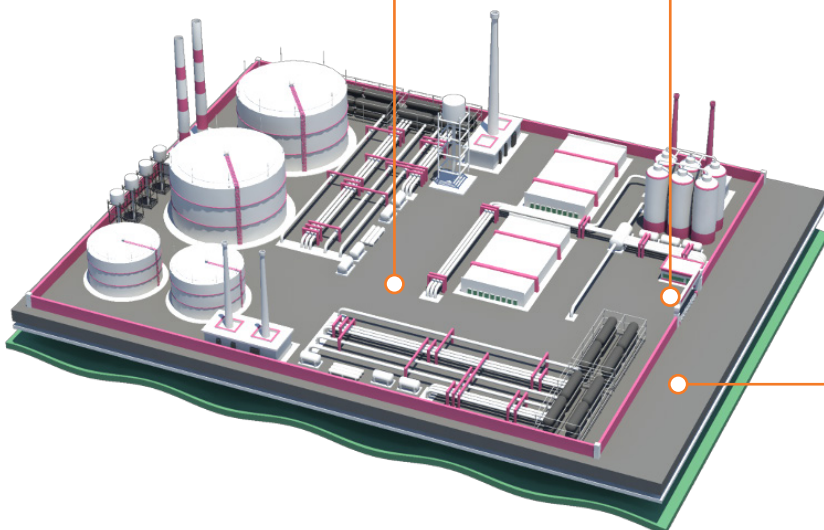
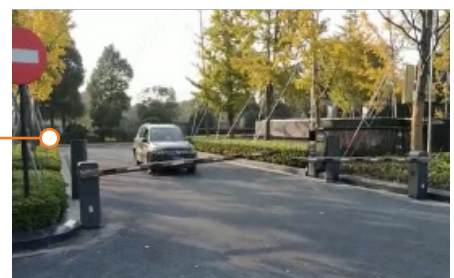


Factory Road

- Blacklist/whitelist
- Vehicle tracking
- Speeding reminder
- Illegal parking

Entrance

- ANPR camera
- UVSS system



Oil Tanker

- Road safety
- Unsafe driving detection
- Prevent oil theft

AI ANPR



Recognition Result

Vehicle Snapshot

Vehicle Data

- **≥98%** video capture rate (forward facing), which is a significant improvement.
- **≥95%** recognition accuracy rate for certain areas in Europe.
- The majority of countries and areas in Europe, South America, Mid and South Asia are supported.

UVSS BLOCK THE UNWANTED

Under Vehicle Scanning System

In case the vehicle has a hidden bomb, weapon or anything else illegal under the car, the UVSS system can detect dangerous vehicles with abnormal loads.

Users can also compare the under carriage image of a vehicle when they arrive and before they leave.



VEHICLE CONTROL



Blacklist/Whitelist

Unauthorised vehicles are strictly forbidden in certain areas.



Speeding Reminder

Prevent speeding with a reminder.



Vehicle Tracking

Find vehicles using number plate.



Illegal Parking

Vehicles are only allowed to park in designated areas.

ROAD SAFETY



There are cameras installed in all directions on the truck including internal, external, forward-facing and rear-facing. 360° images will be displayed on the truck monitor. For example, when you make a turn, the corresponding external camera image will display on the monitor. Plus, the mobile recorder can detect if the vehicle is speeding.



Mobile Recorder



Screen, Intercom & Alarm Button



Mobile Camera



UNSAFE DRIVING



Statistics show that 90% of accidents happen as a result of poor driver behaviour such as driver fatigue, making phone calls and smoking whilst driving. Oil tankers are heavier with a higher centre of gravity and can be more dangerous.

- Driver behaviour is analysed on the Driver Status Monitor (DSM). The remote monitoring centre will receive an alarm and can notify the driver with two-way audio.
- The DSM also has a timer function, for example driving for 2 hours and resting for 15 minutes. A voice message will be played if the driver is detected as being tired.

DSM



PREVENT OIL THEFT



Oil theft is usually committed by internal staff who have access to the oil output, often working with partners to steal oil with external pipes.



Once the built-in GPS detects the oil tanker has driven off the normal route, staff at the control centre will check the on-board video of this particular vehicle.



Abnormal Route



Check Integrated Video

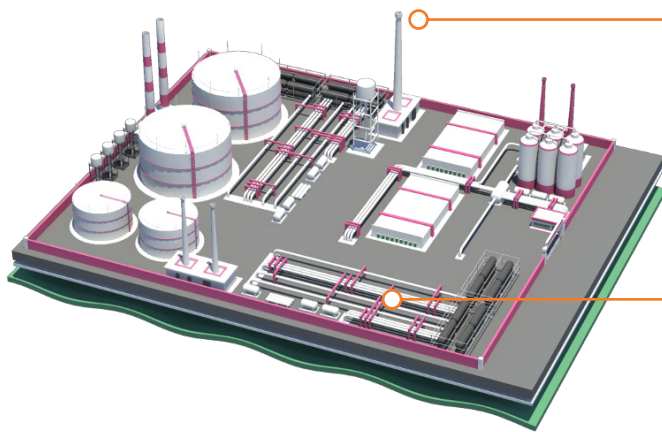


Take Appropriate Measures





EQUIPMENT MANAGEMENT



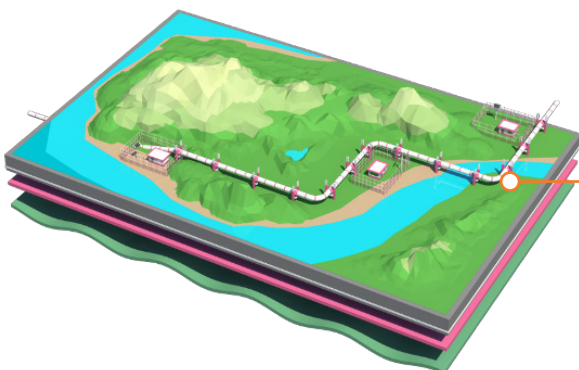
High Vantage Point

- Panoramic view
- Prevent fire accidents



Device Area

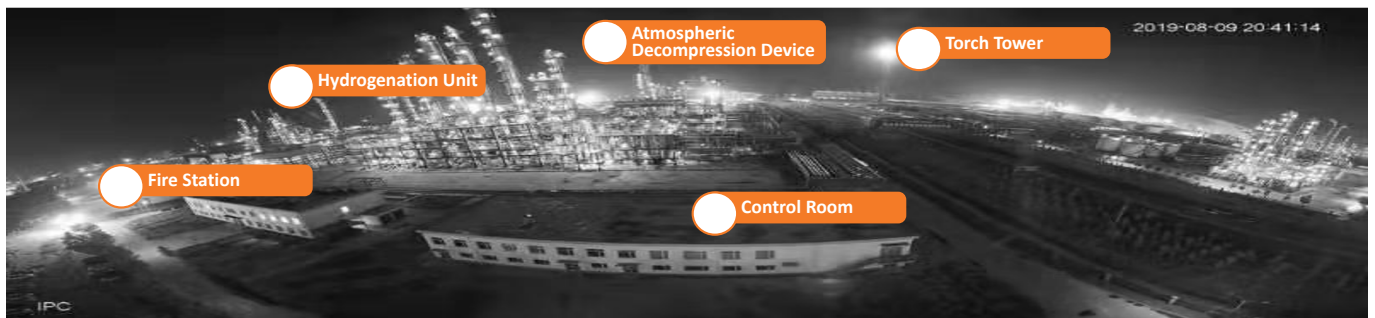
- Protection for all environments
- Industrial television
- Predictive maintenance
- Intelligent identification



Pipeline

- Pipeline intrusion detection
- Ultra long range detection
- Off-grid system

PANORAMIC VIEW



PREVENT FIRE ACCIDENTS



A small spark can cause a disastrous fire. Therefore, it is highly important to take fire control measures as soon as the location of the fire is detected.



Detect Location of Fire



Generate Alarm

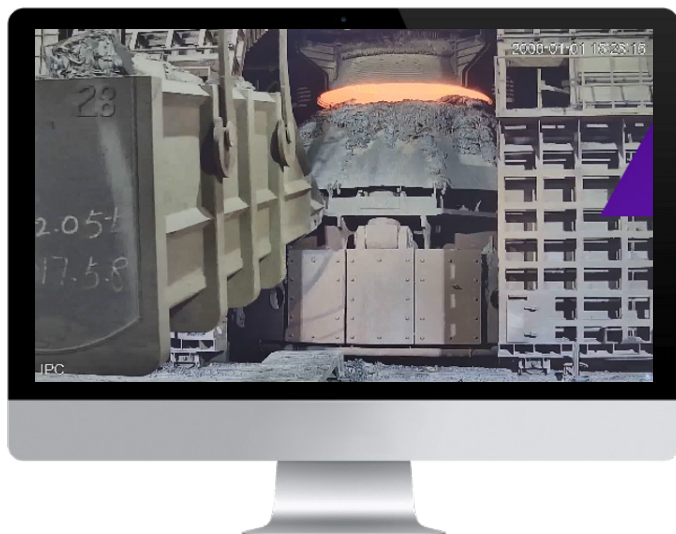


Dispatch Emergency Team

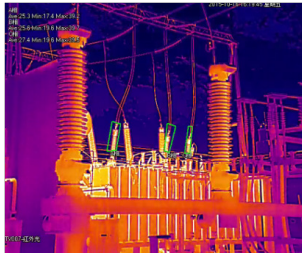
SEE INACCESSIBLE AREAS

Working alongside the production system, real-time HD video offers clear images of the industrial process without physically being in the equipment area.

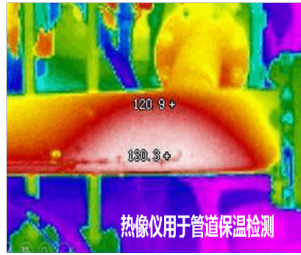
Industrial Television



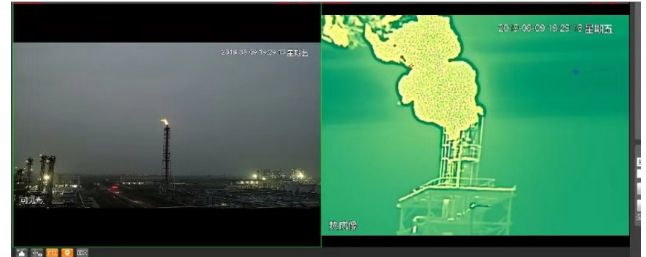
PREDICTIVE MAINTENANCE



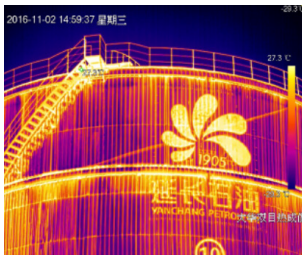
High temperature of the equipment



Abnormal temperature of the pipe



Flame detection of Flare Tower (using thermal camera)



Equipment appearance inspection



Flame detection of Flare Tower (with visible camera)



Equipment flame detection

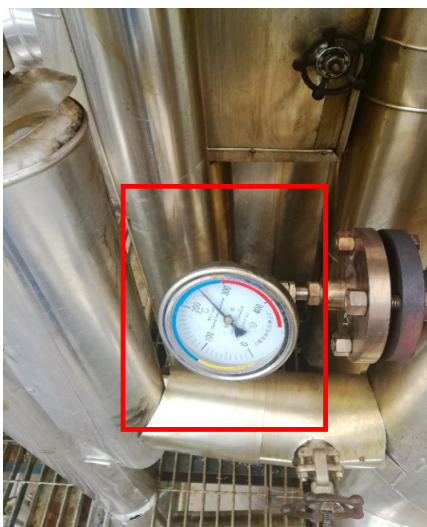


Smoke detection

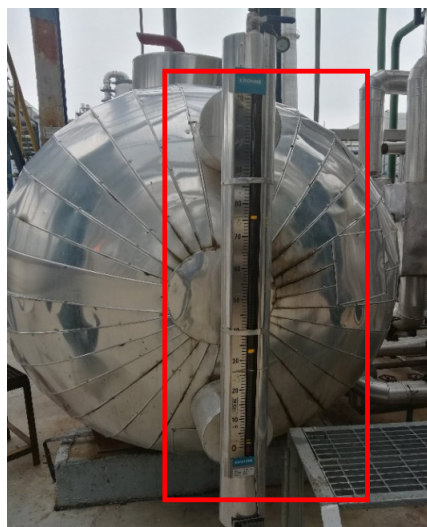
INTELLIGENT IDENTIFICATION

Various Meters and Gauges

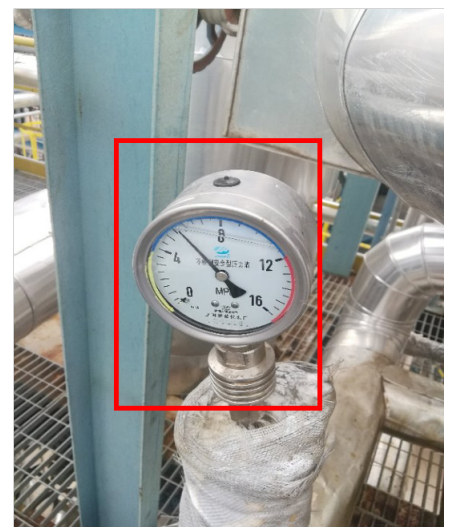
Thermometer



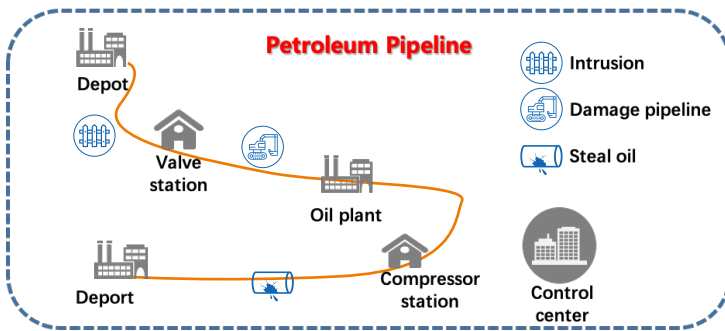
Level Gauge



Pressure Gauge

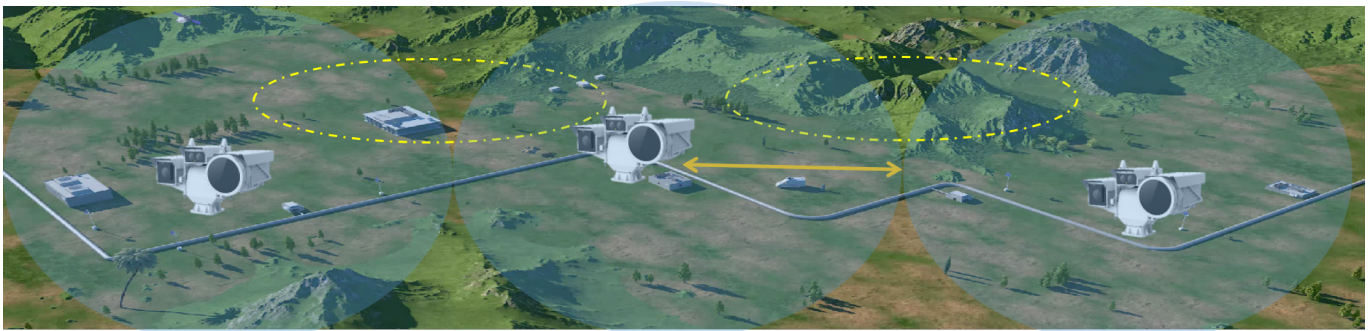
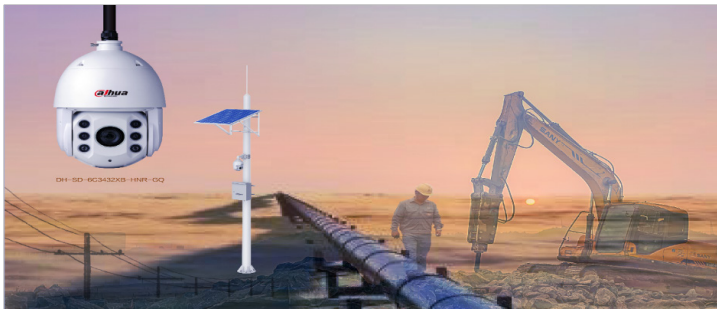


PIPELINE INTRUSION DETECTION



Perimeter Precautions

- Congregating around the pipeline may cause accidents
- Construction vehicles may cause accidental damage to equipment



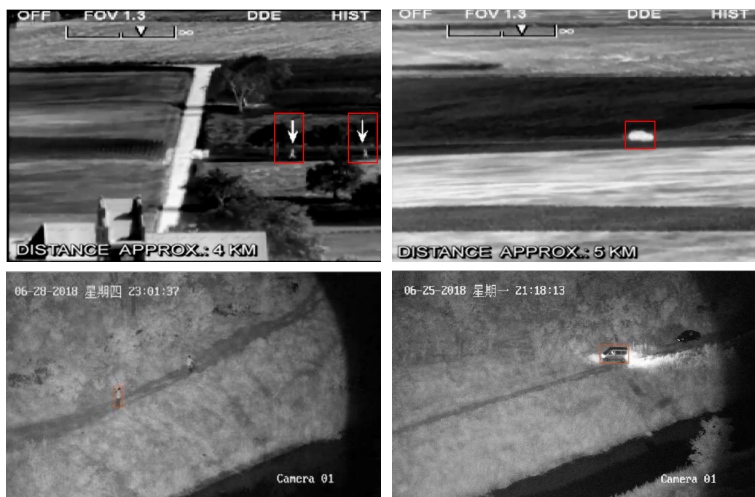
Cooled thermal camera covers ultra long range

- Vehicle recognition distance $\geq 17\text{KM}$
- Human recognition distance $\geq 8\text{KM}$

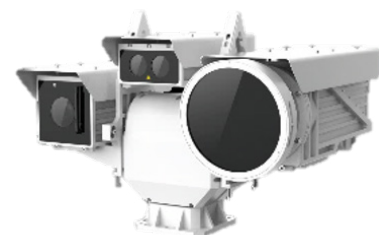
Drone reduces inspection work

- People should be kept away from dangerous areas around the pipeline
- A drone on autopilot can fly a programmed route dramatically saving on staff inspection costs

ULTRA LONG RANGE DETECTION



- Ultra-long range
- Works in all environments
- Deep-learning algorithm
- Smart alarm integration



OFF-GRID SYSTEM

5.8G Wireless

- 0-20Km distance
- Max 867Mbps bandwidth
- IP66 ingress protection
- -40°C~70°C working temperature
- Hidden SSID
- Remote Platform Management

Solar Panels

- Conversion rate up to 18%
- Lightning protection max 40KA

CCTV Security

- Smart track, PTZ, IPC, radar, etc.

Distribution Box

- Controller, PoE switch, Lightning protection, air switch, etc.
- Platform management

Continuous Surveillance
with no power or network

Gel Battery

For different loads and uninterrupted power on rainy days.





SALES MANAGEMENT



Office

- Access control
- Time attendance
- Station control centre



Convenience Store

- Alarm at the cashier desk
- Targeted advertising
- Retail BI solution



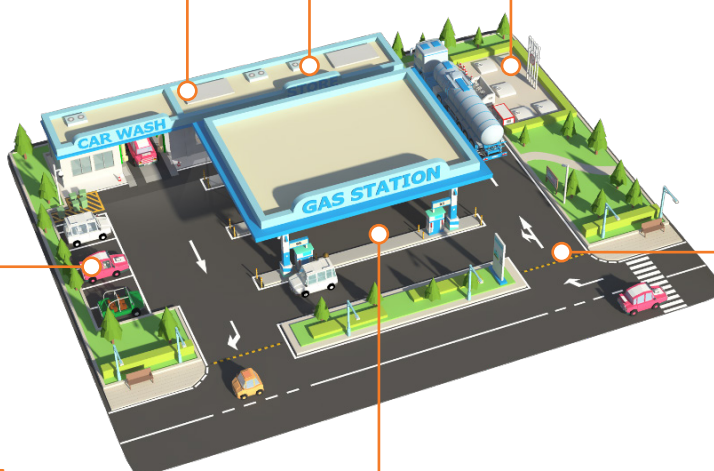
Unloading Area

- Fire detection
- Explosion-proof
- Smoking detection



Parking & EV Charging Zone

- Overtime parking alarm
- EV recognition
- EV data collection



Refueling Area

- Audio recording
- Fire detection
- Vehicle recognition



Entrance & Exit

- Vehicle recognition
- Vehicle flow analysis
- Black and VIP list

CUSTOMER INSIGHT



Blacklist Vehicle Alarm



Locate Target Vehicle Quickly



Customised Service for VIP Clients



Optimised Operation with Flow Analysis



Remote Fuel Price Check



AI MAKES PAYMENT EASIER

Number Plate Recognition

Plate number: xxxxxx



Remote Fuel Price Control

The station system will remotely adjust the price for each individual customer.



Targeted Advert Display

Adverts related to the customer will be displayed while the customer is waiting.



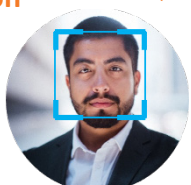
DEMO VIDEO

Face Recognition

Member ID: 1236456

Member Information

Identity: Mr. XX
Gender: Male
Age: 35



Fuel Pump Unlocked

Once the vehicle recognition and face recognition results are confirmed, the fuel pump will be unlocked.

SMART RETAIL FOR BI



People Counting

By knowing how many people visit the store, users can optimise operations with information such as entry rate, conversion rate and customer flow analysis.



Heat Map Fusion

It is important to know which areas in your store are visited most so that you can design a better store layout to generate more interest and increase revenue.

PROFITABLE ADVERTISING



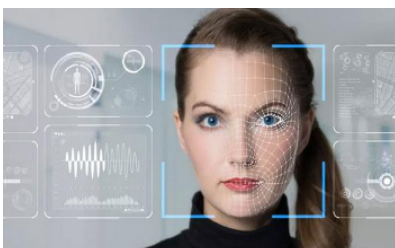
From paper to digital



From manual
to automatic



Targeted Advertising



Gender: Female
Age: Youth
Glasses: No
Expression: Happy





CASE STUDIES

BRUNEI PMB REFINERY



Background

Hengyi Group actively responds to the "Belt and Road" initiative and jointly builds a 10-million-ton refining and chemical integration project with the Brunei government.

Solution

Dahua provided CCTV, access control, (entrance & exit), video wall, storage and servers in 86 locations areas for this project.

Value

The project helps Brunei become a hub for crude oil refinery and refined product exports.

REFINING-CHEMICAL INTEGRATION PROJECT FOR ZHEJIANG PETROLEUM (ZPC)



Background

The project is the fifth biggest refinery plant in the world with 40 million tons' production per year.

Solution

The system front-end used cameras from Dahua's explosion-proof series, thermal imaging PTZs, drones, etc. A cloud storage system, LED large-screen display system and converged communication system were also added.

Value

Dahua provided a strong foundation for the construction of a smart factory.

OTHER CASE STUDIES



BP plc (British Petroleum)

Dahua Technology developed a solution based on AI technology, from engineering design to innovative business development. Digital signage, fuel pump control, cash security and the ability to invest in different payment services in the future were all aspects of the project.



TanQyou

Dahua Technology helped the client to build a safe and innovative fuel station. Customised services included vehicle and face double verification to unlock fuel pump, targeted advertising displays and remote fuel price checks. The cooperation of the two companies is on-going.



China National Petroleum Corporation (CNPC)

The West-East gas transmission pipeline constructed by CNPC has the longest and largest calibre in China. From 2008 to 2015, Dahua video surveillance, perimeter alarm and industrial television systems protect the first-line, second-line and third-line of the pipeline. Dahua has protected a pipeline as long as 4,200km, ensuring a steady gas supply to mid and east China.



Daqing Oilfield Corporation

Daqing Oilfield is the world's largest tertiary oil production base. Daqing Oilfield has more than 90,000 oil wells and boasts 27 consecutive years of crude oil production reaching 50 million tons. For the project Dahua provided CCTV and a perimeter alarm system to help build a digitised oilfield.



Angot Oil Field

The project is located in northern Afghanistan, including Gothic (Angot) and Kashi in Cameroon (Kash-kal). Dahua provided speed domes on the front end for auto-tracking and DVRs for back-end storage.



Italy Tessenderlo Chemical

Dahua upgraded the customer's former analogue system to a compatible HD IP system. The solution chosen met the client's needs perfectly. Thanks to high definition images (up to 8Mp), the client can now check every detail and monitor 24 hours a day, 7 days a week.



KEY PRODUCTS



EPC245U-PTZ-IR

Anti-corrosion Camera



- 1/2.8" 2Megapixel STARVIS™ CMOS
- Powerful 45x optical zoom
- 316L stainless steel housing
- Starlight technology
- IR distance up to 200m
- IP68, ATEX



SD60230U-HNI-SL

Anti-corrosion Camera



- 1/2.8" 2Megapixel STARVIS™ CMOS
- Powerful 30x optical zoom
- Starlight technology
- Auto-tracking and IVS
- IP68, IK10, NEMA 4X
- Material: 316L Stainless steel



PSDW8842M-A180

Panoramic Camera

- Panoramic: Four 1/1.8" 2 Megapixel progressive scan CMOS
- PTZ: One 1/1.8" 4 Megapixel progressive scan CMOS
- Supports 180-degree panoramic view
- IR distance up to 400m
- Smart tracking, Crowd map



TPC-PT8621A

Thermal PTZ Camera

- 640x512 VOx uncooled thermal sensor technology
- Athermalized lens (thermal), focus-free
- 1/2.8" 2 megapixel progressive scan CMOS
- Supports fire detection and alarm, including smog
- Max 140°/s pan speed, 360° endless pan rotation



IVSS7024DR-8i

Intelligent server

- Max 512Mbps incoming bandwidth
- 256-channel IP video access
- Up to 128-channel perimeter protection
- Up to 64-channel face recognition with normal IPC
- Up to 160-channel face recognition with face detection IPC
- Up to 32-channel video metadata
- Up to 50 face databases with 300,000 face pictures in total



DSS PRO

VMS Platform

Easy Expansion

- Distributed hardware extension.

High Reliability

- Supports hot standby for master server

High Compatibility

- Devices included: Network camera, network speed dome, decoder, NVR, DVR, ANPR, access control device, VDP, alarm controller, etc.

Address & Telephone

Dahua UK & Ireland (Head Office)

Quantum
60 Norden Road
Maidenhead
Berkshire
SL6 4AY

Tel: +44 (0) 1628 613 500

Technical Hotline: +44 (0) 1628 613 500

Dahua UK & Ireland (Leeds Office)

Ground Building
No.3 White Rose Office Park
Millshaw Park Lane
Leeds
LS11 0DL

Official Website



www.dahuasecurity.com/uk

Dahua Email Contacts

Sales: sales.UK@dahuatech.com

Tech: support.UK@dahuatech.com

Social Media



LinkedIn

Dahua UK & Ireland



facebook

Dahua UK & Ireland



YouTube

Dahua UK & Ireland



Dahua UK & Ireland



Driving Innovation to an AIoT Future

* AIoT is the convergence of Artificial Intelligence (AI) and the Internet of Things (IoT) where connected devices meet human interface. This is enabling unlimited possibilities through the integration of connected devices and security solutions.

* Design and specifications are subject to change without notice.

Ver.1, October 2020

DAHUA UK & IRELAND

Quantum, 60 Norden Road, Maidenhead, Berkshire SL6 4AY
Tel: +44 (0) 1628 613 500
sales.UK@dahuatech.com
support.UK@dahuatech.com

