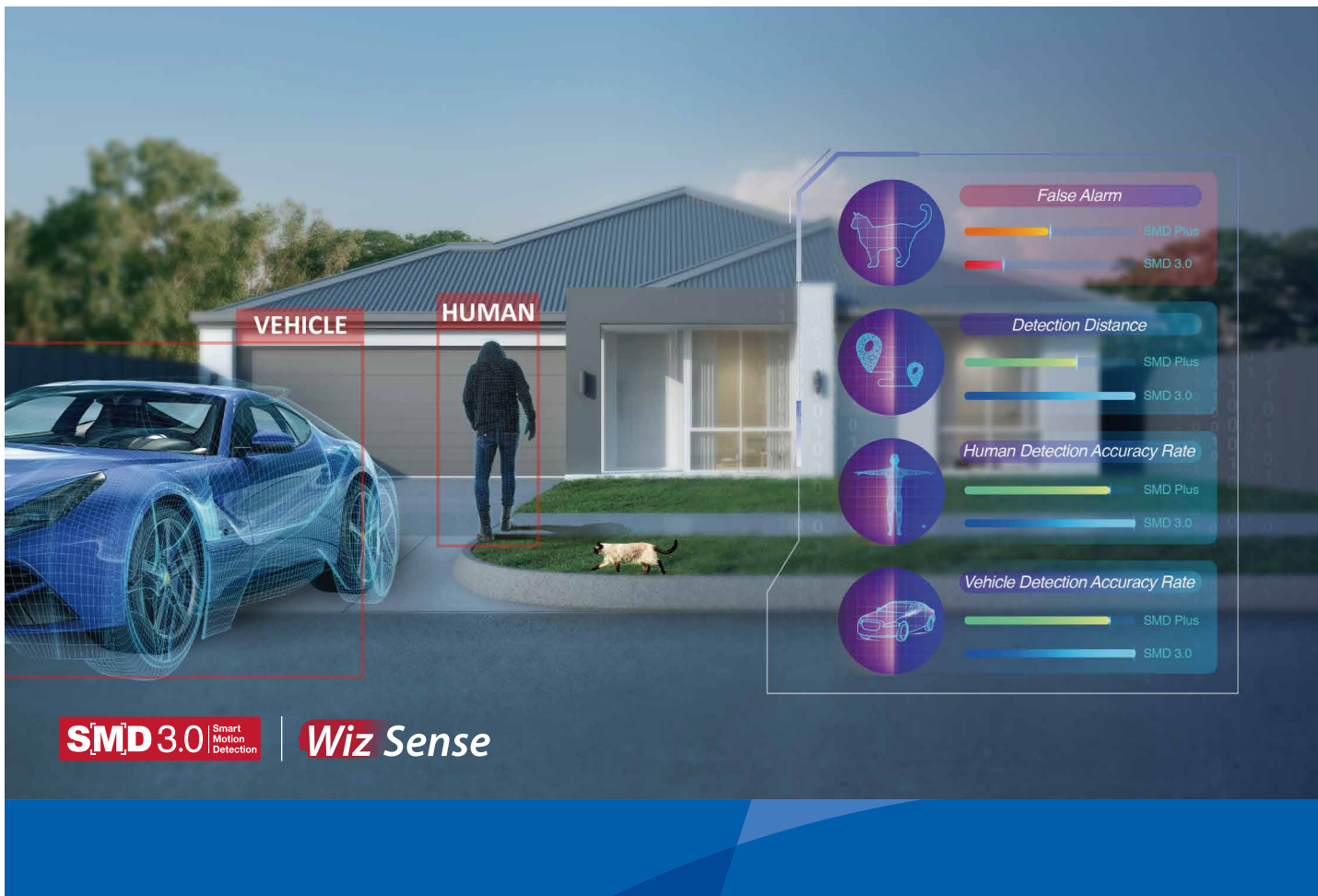


# Faster AI, Better Safeguard

## Dahua IP Camera SMD 3.0



The main image shows a blue sports car and a person walking in front of a house. Red boxes labeled 'VEHICLE' and 'HUMAN' are overlaid on the car and person respectively. A dog is also visible on the lawn. To the right, a comparison chart shows performance metrics for SMD Plus and SMD 3.0:

Metric	SMD Plus	SMD 3.0
False Alarm	Low (Short bar)	High (Long bar)
Detection Distance	Long (Long bar)	Short (Short bar)
Human Detection Accuracy Rate	High (Long bar)	Low (Short bar)
Vehicle Detection Accuracy Rate	High (Long bar)	Low (Short bar)

**SMD 3.0** Smart Motion Detection | **Wiz Sense**



Reduced False Alarms



Longer Detection Distance



Higher Detection Accuracy

## Highlights

### Reduced False Alarms

Through the upgrading of its AI capabilities, false alarms caused by animals, leaves, and lights, etc. are significantly reduced.



**False alarm rate**

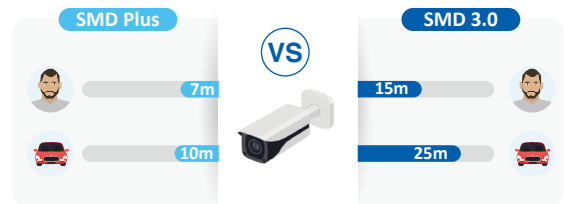


### Longer Detection Distance

By constantly improving its AI capabilities, the detection range of the same device has increased by as much as 80%.



**Detection distance**  
(2.8mm fixed-focal camera)

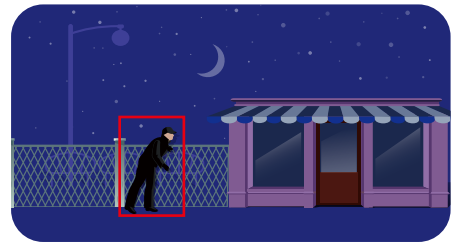


### Higher Detection Accuracy

Through the upgrade of its AI capabilities, the maximum detection accuracy for human and vehicle can reach up to 99%.



**Detection accuracy rate**  
(Human & Vehicle)



### Quick Target Search

Allows extraction and classification of human and vehicles from massive video data, making it easy for end users to trace and analyze data history. It also offers optional human/vehicle playback to accelerate target searching and save event retrieval time.

### Simple Configuration

SMD 3.0 is enabled by default. It also supports classification settings for human and vehicle.

## Application Scenarios



### Factory

- Early warning
- Reduces the number of security staff
- Prevents unauthorized access to restricted areas



### Villa

- Prevents unauthorized entry to the property
- Real-time monitoring and alarm push notifications

\* Design and specifications are subject to change without notice.

Ver. 1, Mar. 2021

## DAHUA TECHNOLOGY

No.1199 Bin'an Road, Binjiang District, Hangzhou, China. 310053

Tel: +86-571-87688883 Fax: +86-571-87688815

Email: overseas@dahuatech.com

www.dahuasecurity.com

