

SECURITY SCREENING

PRODUCTS AND SOLUTIONS



COMPANY INTRODUCTION

Zhejiang Dahua Technology Co., Ltd. (Dahua Technology) is a world-leading video-centric smart IoT solution and service provider. Based on technological innovations, Dahua Technology offers end-to-end security solutions, systems, and services to create value for city operations, corporate management, and consumers.

The company continues to explore emerging opportunities based on video IoT technologies and has already established businesses in security screening, machine vision, video conferencing systems, professional drones, smart fire safety, automobile technologies, smart storage, robotics, etc.





CONTENT

01

Metal Detector ----- 01-05

- ☐ Walk-Through Metal Detector
- ☐ Hand Held Metal Detector

02

Screening Machine And Server ----- 06-12

- ☐ Security Screening Machine
- ☐ AI Security Screening Server

| Walk-through Metal Detector

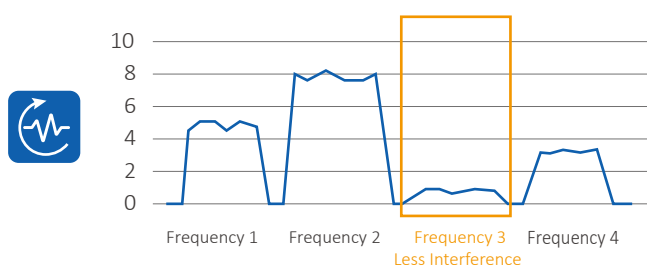
• High Sensitivity Metal Detection

33/18/6 detection zones with corresponding indicator lights.

Counts the number of passing people and the number of metal alarms.

Digital signal processing and filtering system ensure exceptional immunity to electromagnetic interference.

Adjustable Frequency: allows adjustment when operating in proximity with other WTMD or other environmental noise sources.



• Auto-search Frequency

Auto search frequency function greatly simplifies configuration.

System calculates the immunity of every frequency.

Automatically selects the lowest immunity frequency.

• Multi-scene Application

Supports multiple application scenarios and customized scenarios, and offers easy to change sensitivity.



• Thermal Temperature Monitoring



Thermal body temperature monitoring features:

Non-contact temperature monitoring: face temperature monitoring

Temperature accuracy: $\pm 0.5^{\circ}\text{C}$ (without black body)

Temperature filtering: adjustable threshold (a temperature that exceeds the threshold will trigger the alarm light)

Dual image fusion (visible image: 4MP; thermal image: 256×192)



4MP@25/30 fps



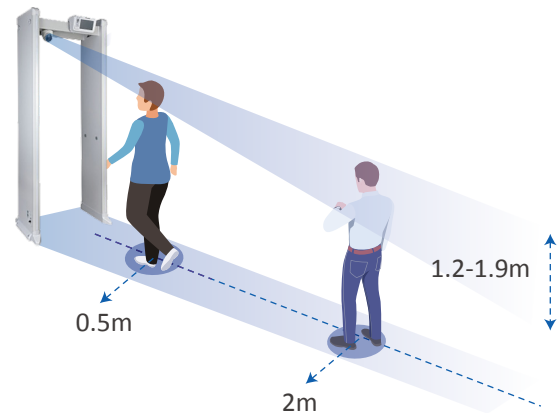
Face Detection



Body Temperature
Monitoring

• Wide Monitoring Area

Thermal camera field of view: H: 50.6°, V: 37.8°
Detection distance: 0.5m to 2m
Target height: 1.2m to 1.9m



• Fire Retardant

Fire Retardant High-Pressure Laminate (HPL) is safe, harmless, and sturdy. They are treated with imported fire retardant chemicals that minimize smoke emission and delay the rise in temperature, making it more resistant to fire.



Nonflammable



Self-extinguishing

• Safer Design

Safe to use with its 12V DC low voltage design
Anti-loose aviation power plug.



• Wide Temperature Range





Working temperature:
-20 to 65 °C
Complies with IEC
60068-2-1 and IEC
60068-2-2 standard tests
Ensures stable operation in a
semi-outdoor environment



• Package Drop & Vibration Test



A walk-through metal detector is very heavy (max. 61kg). Sturdy packaging can help reduce damage during transit. We conduct drop and vibration tests to simulate package handling and road transportation, thus reducing the possibility of any damage.

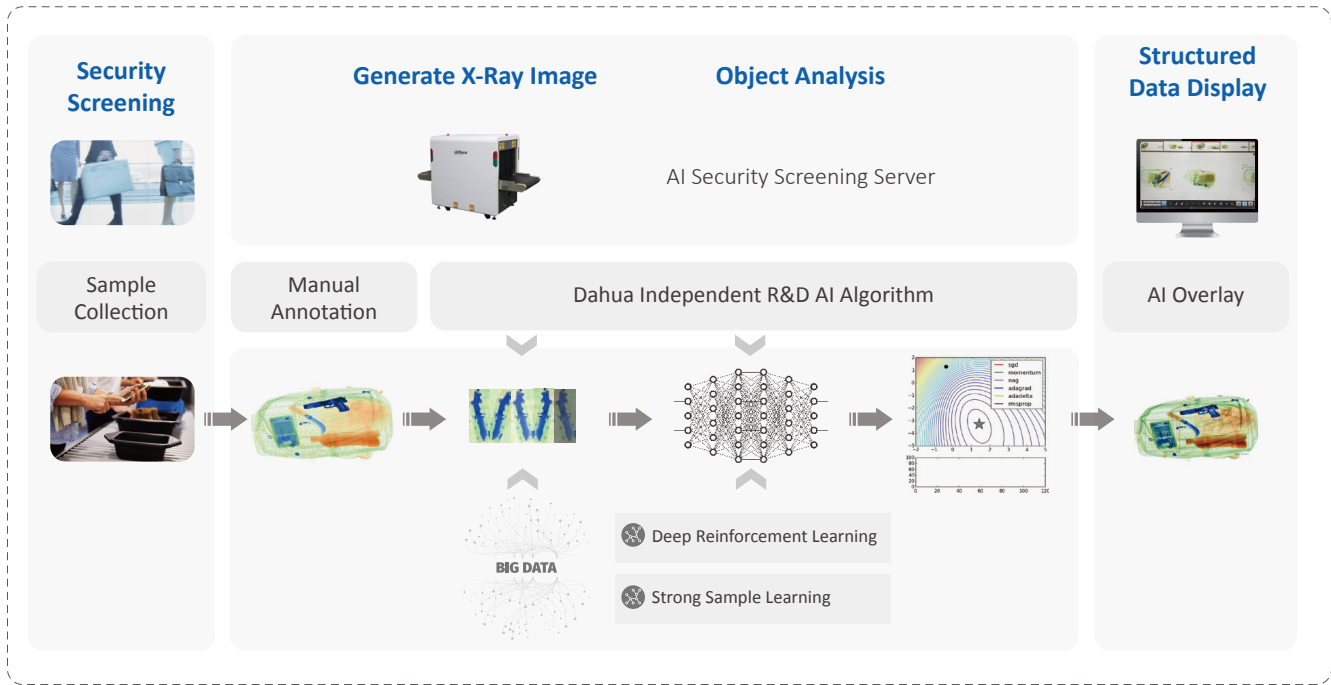
Module	DHI-ISC-D733-T	DHI-ISC-D718-T	DHI-ISC-D733
Appearance			
Sensitivity	Ultra High	Ultra High	Ultra High
Detection Zones	33	18	33
Display	7-inch LCD Touch Screen	7-inch LCD Touch Screen	7-inch LCD Touch Screen
IR Remoter	—	—	—
Built-in Program	72	72	72
Sensitivity Levels	255	255	255
Frequency	100	100	100
Alarm Tones	16	16	16
Alarm Volumes	10	10	10
Alarm Duration	—	—	—
IR Mode	Adjustable Multiple Modes	Adjustable Multiple Modes	Adjustable Multiple Modes
Thermal Camera			
Detector Type	Vanadium Oxide Uncooled FPA	Vanadium Oxide Uncooled FPA	—
Max. Resolution	256 × 192	256 × 192	—
Field of View	H: 50.6°, V: 37.8°	H: 50.6°, V: 37.8°	—
Resolution	4MP (2336 × 1752)	4MP (2336 × 1752)	—
IR Distance	≥ 30m (98.43 ft)	≥ 30m (98.43 ft)	—
RJ45	1x10M/100M	1x10M/100M	—
General Specification			
Power Supply	12V, 25W (Max.) with 100-240V AC-DC power adapter	12V, 25W (Max.) with 100-240V AC-DC power adapter	12V, 12W (Max.) with 100-240V AC-DC power adapter
Overall Exterior Size	2210mm × 928mm × 572mm	2210mm × 928mm × 572mm	2210mm × 928mm × 572mm
Packaging & Weight	2409mm × 868mm × 304mm & 68kg	2409mm × 868mm × 304mm & 68kg	2409mm × 868mm × 304mm & 68kg
Passageway Interior Size	1950mm × 714mm × 421mm	1950mm × 714mm × 421mm	2057mm × 714mm × 421mm
Operating Temperature	-20°C~+65°C	-20°C~+65°C	-20°C~+65°C
Certification	CE-LVD, CE-EMC, FCC, ROHS	CE-LVD, CE-EMC, FCC, ROHS	CE-LVD, CE-EMC, FCC, ROHS
Warranty	2 years	2 years	2 years

Module	DHI-ISC-D718	DHI-ISC-D118	DHI-ISC-D106
Appearance			
Sensitivity	Ultra High	High	High
Detection Zones	18	18	6
Display	7-inch LCD Touch Screen	3.5-inch LCD	3.5-inch LCD
IR Remoter	—	Supported	—
Built-in Program	72	12	12
Sensitivity Levels	255	255	255
Frequency	100	Auto-search, 20	Auto-search, 20
Alarm Tones	16	9	9
Alarm Volumes	10	10	10
Alarm Duration	—	0-10s	0-10s
IR Mode	Multimode Adjustable	Multimode Adjustable	Multimode Adjustable
Thermal Camera			
Detector Type	—	—	—
Max. Resolution	—	—	—
Field of View	—	—	—
Resolution	—	—	—
IR Distance	—	—	—
RJ45	—	—	—
General Specification			
Power Supply	12V, 12W (Max.) with 100-240V AC-DC power adapter	12 V, 11W (Max.), power adapter (included): 100 V–240 V AC, 50/60 Hz	12 V, 11W (Max.), power adapter (included): 100 V–240 V AC, 50/60 Hz
Overall Exterior Size	2210mm × 928mm × 572mm	2208mm × 866mm × 488mm	2208mm × 866mm × 488mm
Packaging & Weight	2409mm × 868mm × 304mm & 68kg	2275mm × 700mm × 220 mm & 47Kg	2275mm × 700mm × 220 mm & 47Kg
Passageway Interior Size	2057mm × 714mm × 421mm	2003mm × 720mm × 393mm	2003mm × 720mm × 393mm
Operating Temperature	-20°C~+65°C	-20°C~+65°C	-20°C~+65°C
Certification	CE-LVD, CE-EMC, FCC, ROHS	CE-LVD, CE-EMC, FCC, ROHS	CE-LVD, CE-EMC, FCC, ROHS
Warranty	2 years	2 years	2 years

Module	ISC-H002	ISC-H001
Appearance		
Sensitivity	Ultra High	High
Detection Zones	1	1
Sensitivity Levels	4	2
Display	Supports sound, light or vibration alarm	Supports sound, light or vibration alarm
IR Remoter	—	—
Low Battery Alert	Supported	Supported
Power Supply	AA battery or rechargeable battery	6F22/15F8H 9V battery or rechargeable battery
Overall Exterior Size	378mm × 80mm × 36mm	420mm × 90mm × 45mm
Packaging & Weight	433mm × 130mm × 70mm & 620g	443mm × 110mm × 63mm & 500g
Operating Temperature	-20°C~+65°C	-20°C~+55°C
Certification	CE-LVD, CE-EMC, FCC	CE-LVD, CE-EMC, FCC, RoHs
Warranty	2 years	2 years

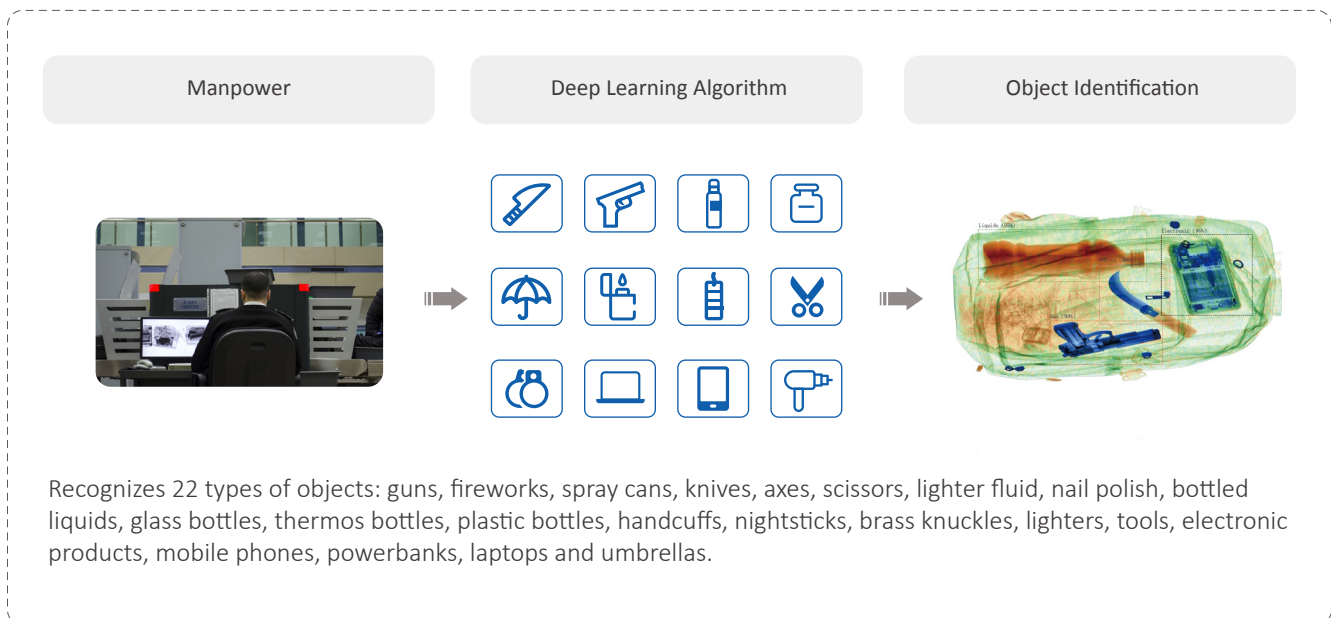
Security Screening Machine

Prohibited Object Recognition



Object Identification Improves Efficiency

The built-in deep learning algorithm can realize object recognition with high accuracy without relying on staff and personnel. When prohibited objects are detected, they can be marked with different color according to danger level. It assists security inspectors to quickly catch suspected individuals, reduces pressure of security personnel, and improves work efficiency.



- Better Image Quality



High Penetration

The device is equipped with 160 KV X-ray generator and uses high-energy x-rays to achieve higher penetration.

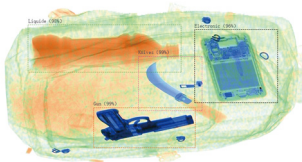



Wire Resolution & X-ray Protection

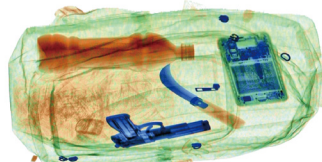
The device uses 160KV independently developed image algorithm, achieving 38 AWG (0.1mm) wire resolution. Its x-ray protection is higher than the international standard. The leakage dose rate is less than 0.9 μ Gy/h.



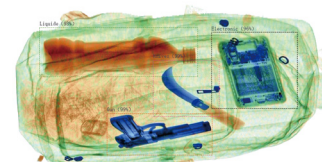
Image Processing Functions




 Color with AI Overlay



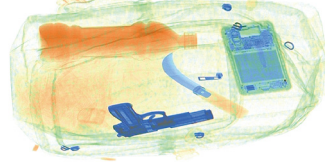
 Super Enhancement



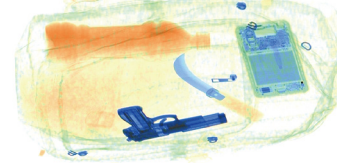
 Super Enhancement with AI Overlay



 Organic Stripping



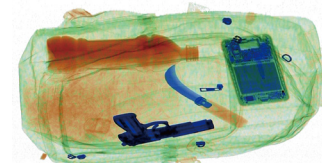
 High-energy Enhancement



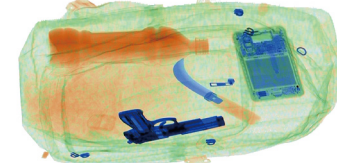
 Light



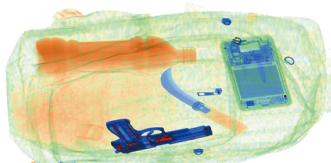
 Metal Stripping



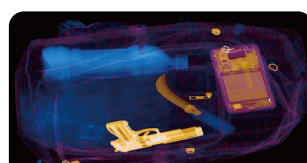
 Low-energy Enhancement



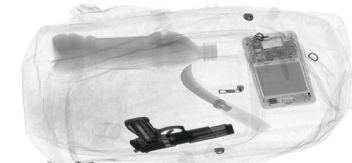
 Dark



 High Density Alert



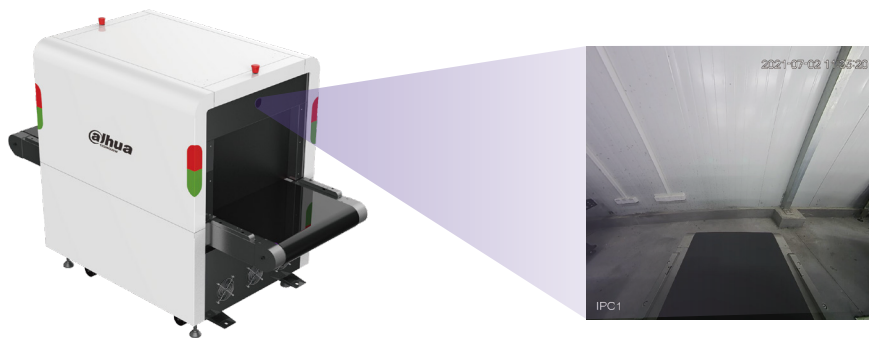
 Inverse



 Black and White

• Built-in Baggage Surveillance

There is a built-in camera in each end of the tunnel. It monitors the behavior of passengers when they put in and take back their baggage. The video stream can be stored in the server of security screening machine. Live view of the camera can also be played on the control display.

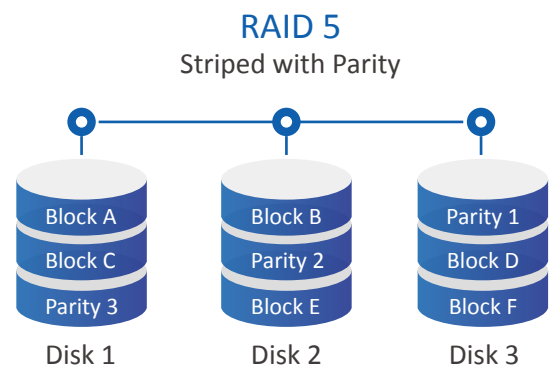




• Greater Data Security







The Dahua security screening machine uses Linux-based operation system, making it more secure and more stable. It offers better performance compared with other OS.

Supports HDD storage capacity management and RAID
Disk mode includes: single disk, RAID0/1/5 (enterprise-level), global hot spare.
Uses RAID1/5 to achieve better data reliability, availability and performance.



Module	ISC-M5030	ISC-M6040
Appearance		
Main Processor	Intel dual-core processor	Intel dual-core processor
RAM	8GB, expandable to 32GB	8GB, expandable to 32GB
OS	Embedded Linux	Embedded Linux
Wire Resolution	38 AWG (0.1mm)	38 AWG (0.1mm)
Penetration	Typical: 36mm; Standard: 34mm	Typical: 36mm; Standard: 34 mm
X-ray Generator	Single-view	Single-view
Generator Anode Voltage	160 Kv	160 Kv
Leakage Doserate	≤0.9μSv/h (μGy/h)	≤0.9μSv/h (μGy/h)
Tunnel Size	500 mm × 300 mm	620 mm × 420 mm
Conveyor Speed	0.2m/s	0.2m/s
Conveyor Capacity	150kg	200kg
Image Enhancement	Color/black and white, local enhancement, super enhancement, edge enhancement, image scanning, organic stripping, metal stripping, mixture stripping, Inverse, high-energy enhancement, low-energy enhancement, light, dark, density threat alert Z7/Z8/Z9, high density alert, AI overlay, vertical flip, pseudo color and more	Color/black and white, local enhancement, super enhancement, edge enhancement, image scanning, organic stripping, metal stripping, mixture stripping, Inverse, high-energy enhancement, low-energy enhancement, light, dark, density threat alert Z7/Z8/Z9, high density alert, AI overlay, vertical flip, pseudo color and more
Live View	Displays X-ray image and camera live view, and AI overlays.	Displays X-ray image and camera live view, and AI overlays.
Object Recognition	Recognizes and highlights objects with dynamic bounding AI overlays	Recognizes and highlights objects with dynamic bounding AI overlays
Type Identification	Recognizes 22 types of objects: guns, fireworks, spray cans, knives, axes, scissors, lighter fluid, nail polish, bottled liquids, glass bottles, thermos bottles, plastic bottles, handcuffs, nightsticks, brass knuckles, lighters, tools, electronic products, mobile phones, powerbanks, laptops and umbrellas	Recognizes 22 types of objects: guns, fireworks, spray cans, knives, axes, scissors, lighter fluid, nail polish, bottled liquids, glass bottles, thermos bottles, plastic bottles, handcuffs, nightsticks, brass knuckles, lighters, tools, electronic products, mobile phones, powerbanks, laptops and umbrellas
Danger Level	High risk, warning, and safe (can be customized)	High risk, warning, and safe (can be customized)
Picture Storage	Min 1 million pictures with object info and types	Min 1 million pictures with object info and types
Zoom In	1–64x zoom in	1–64x zoom in
Video Output	2 channels of display source output; 1920 x1080 Max	2 channels of display source output; 1920 x1080 Max
Video Input	12 channels of video input; Supports 4K, H.265, H.264	12 channels of video input; Supports 4K, H.265, H.264
Audio Output	2 channels; MIC out (3.5 mm)	2 channels; MIC out (3.5 mm)
Built-in Disk	4x10T SATA disks max; 1x4T disk by default	4x10T SATA disks max; 1x4T disk by default
Disk Mode	Single disk; RAID0/1/5 (enterprise-level); global hot spare	Single disk; RAID0/1/5 (enterprise-level); global hot spare
Network Port	1 × RJ45 1000M port; 2 × RJ45 POE 100M ports	1 × RJ45 1000M port; 2 × RJ45 POE 100M ports
Ports	1x RS232 for keyboard, 1x Alarm Output	1x RS232 for keyboard, 1x Alarm Output
General Specification		
Power Supply	AC 220–240V; AC 100-130V (optional)	AC 220–240V; AC 100-130V (optional)
Typical/Max Power Consumption	500W/1KW	500W/1KW
Operating Temperature	0°C~+45°C (+32 °F ~ +113 °F)	0°C~+45°C (+32 °F ~ +113 °F)
Dimensions & Weight	1664mm × 765.6mm × 1202mm & 430kg	1993mm × 870mm × 1297mm & 470Kg
Monitor	1 sets, 21.5" LCD monitor	1 sets, 21.5" LCD monitor
Accessories	Roller table x1/simple special keyboard x1/mouse x1	Roller table x1/special keyboard x1/mouse x1
Package Dimensions & Weight	1805mm × 1026mm × 1425mm & 490 kg	2140mm × 1178mm × 1544mm & 540 kg
Operate Table	—	—
Certification	CE-MD, CE-LVD, CE-EMC, FCC, ROHS	CE-MD, CE-LVD, CE-EMC, FCC, ROHS
Warranty	2 years	2 years

Module	ISC-M6550	ISC-M6550D
Appearance		
Main Processor	Intel dual-core processor	Intel quad-core processor
RAM	8GB, expandable to 32GB	16GB, expandable to 32GB
OS	Embedded Linux	Embedded Linux
Wire Resolution	38 AWG (0.1mm)	38 AWG (0.1mm)
Penetration	Typical: 36mm, Standard: 34mm	36mm
X-ray Generator	Single-view	Dual-view
Generator Anode Voltage	160 Kv	160 Kv
Leakage Doserate	≤0.9μSv/h (μGy/h)	≤0.9μSv/h (μGy/h)
Tunnel Size	650mm × 500mm	650mm × 500mm
Conveyor Speed	0.2m/s	0.2m/s
Conveyor Capacity	200kg	200kg
Image Enhancement	Color/black and white, local enhancement, super enhancement, edge enhancement, image scanning, organic stripping, metal stripping, mixture stripping, inverse, high-energy enhancement, low-energy enhancement, light, dark, density threat alert Z7/Z8/Z9, high density alert, AI overlay, vertical flip, pseudo color and more	Color/black and white, local enhancement, super enhancement, edge enhancement, image scanning, organic stripping, metal stripping, mixture stripping, inverse, high-energy enhancement, low-energy enhancement, light, dark, density threat alert Z7/Z8/Z9, high density alert, AI overlay, vertical flip, pseudo color and more
Live View	Displays X-ray image and camera live view, and AI overlays	Displays X-ray image and camera live view, and AI overlays
Object Recognition	Recognizes and highlights objects with dynamic bounding AI overlays	Recognizes items and highlights objects with dynamic bounding boxes over the image
Type Identification	Recognizes 22 types of objects: guns, fireworks, spray cans, knives, axes, scissors, lighter fluid, nail polish, bottled liquids, glass bottles, thermos bottles, plastic bottles, handcuffs, nightsticks, brass knuckles, lighters, tools, electronic products, mobile phones, powerbanks, laptops and umbrellas	Recognizes 22 types of objects: guns, fireworks, spray cans, knives, axes, scissors, lighter fluid, nail polish, bottled liquids, glass bottles, thermos bottles, plastic bottles, handcuffs, nightsticks, brass knuckles, lighters, tools, electronic products, mobile phones, powerbanks, laptops and umbrellas
Danger Level	High risk, warning, and safe (can be customized)	High risk, warning, and safe (can be customized)
Picture Storage	Min 1 million pictures with object info and types	Min 1 million pictures with object info and types
Zoom In	1–64x zoom in	1–64x zoom in
Video Output	2 channels of display source output; 1920 x1080 Max	2 channels of display source output; 1920 x1080 Max
Video Input	12 channels of video input; Supports 4K, H.265, H.264	12 channels of video input; Supports 4K, H.265, H.264
Audio Output	2 channels; MIC out (3.5mm)	2 channels; MIC out (3.5 mm)
Built-in Disk	4x10T SATA disks max; 1x4T disk by default	4x10T SATA disks max; 1x4T disk by default
Disk Mode	Single disk; RAID0/1/5 (enterprise-level); global hot spare	Single disk; RAID0/1/5 (enterprise-level); global hot spare
Network Port	1 × RJ45 1000M port; 2 × RJ45 POE 100M ports	1xRJ45 1000M port; 2x RJ45 POE 100M ports
Ports	1 x RS232 for keyboard, 1x Alarm Output	1xRS232 for keyboard, 1x Alarm Output
General Specification		
Power Supply	AC 220–240V; AC 100-130V (optional)	AC 220–240V; AC 100–130V (optional)
Typical/Max Power Consumption	500W/1KW	1KW/1.5KW
Operating Temperature	0°C~+45°C (+32 °F ~ +113 °F)	0°C~+45°C (+32 °F ~ +113 °F)
Dimensions & Weight	2054mm × 916mm × 1435mm & 480kg	2320mm × 1295mm × 1435mm & 600kg
Monitor	1 sets, 21.5" LCD monitor	2 sets, 21.5" LCD monitor
Accessories	Roller table x1/special keyboard x1/mouse x1	Roller table x1/special keyboard x1/mouse x1
Package Dimensions & Weight	2110mm × 1200mm × 1700mm & 550 kg	2490mm × 1478mm × 1618mm & 850kg
Operate Table	Package size 1276mm & 376mm & 200mm & 38.5kg	Package size 1276mm × 376mm × 200mm & 38.5kg
Certification	CE-MD, CE-LVD, CE-EMC, FCC, ROHS	CE-MD, CE-LVD, CE-EMC, FCC, ROHS
Warranty	2 years	2 years

Module	ISC-M100100	ISC-M100100D
Appearance		
Main Processor	Intel quad-core processor	Intel quad-core processor
RAM	8GB, expandable to 32GB	16GB, expandable to 32GB
OS	Embedded Linux	Embedded Linux
Wire Resolution	34 AWG (0.16mm)	38 AWG (0.1mm)
Penetration	Typical: 34mm, Standard: 32mm	36mm
X-ray Generator	Single-view	Dual-view
Generator Anode Voltage	160 Kv	160 Kv
Leakage Doserate	$\leq 0.9\mu\text{Sv/h}$ ($\mu\text{Gy/h}$)	$\leq 0.9\mu\text{Sv/h}$ ($\mu\text{Gy/h}$)
Tunnel Size	1000mm × 1000mm	1000mm × 1000mm
Conveyor Speed	0.2m/s	0.2m/s
Conveyor Capacity	200kg	250kg
Image Enhancement	Color/black and white, local enhancement, super enhancement, edge enhancement, image scanning, organic stripping, metal stripping, mixture stripping, inverse, high-energy enhancement, low-energy enhancement, light, dark, density threat alert Z7/Z8/Z9, high density alert, AI overlay, vertical flip, pseudo color and more	Color/black and white, local enhancement, super enhancement, edge enhancement, image scanning, organic stripping, metal stripping, mixture stripping, inverse, high-energy enhancement, low-energy enhancement, light, dark, density threat alert Z7/Z8/Z9, high density alert, AI overlay, vertical flip, pseudo color and more
Live View	Displays X-ray image and camera live view, and AI overlays	Displays X-ray image and camera live view, and AI overlays
Object Recognition	Recognizes and highlights objects with dynamic bounding AI overlays	Recognizes and highlights objects with dynamic bounding AI overlays
Type Identification	Recognizes 22 types of objects: guns, fireworks, spray cans, knives, axes, scissors, lighter fluid, nail polish, bottled liquids, glass bottles, thermos bottles, plastic bottles, handcuffs, nightsticks, brass knuckles, lighters, tools, electronic products, mobile phones, powerbanks, laptops and umbrellas	Recognizes 22 types of objects: guns, fireworks, spray cans, knives, axes, scissors, lighter fluid, nail polish, bottled liquids, glass bottles, thermos bottles, plastic bottles, handcuffs, nightsticks, brass knuckles, lighters, tools, electronic products, mobile phones, powerbanks, laptops and umbrellas
Danger Level	High risk, warning, and safe (can be customized)	High risk, warning, and safe (can be customized)
Picture Storage	Min 1 million pictures with object info and types	Min 1 million pictures with object info and types
Zoom In	1–64x zoom in	1–64x zoom in
Video Output	2 channels of display source output; 1920 x1080 Max	2 channels of display source output; 1920 x1080 Max
Video Input	12 channels of video input; Supports 4K, H.265, H.264	12 channels of video input; Supports 4K, H.265, H.264
Audio Output	2 channels; MIC out (3.5mm)	2 channels; MIC out (3.5 mm)
Built-in Disk	4x10T SATA disks max; 1x4T disk by default	4x10T SATA disks max; 1x4T disk by default
Disk Mode	Single disk; RAID0/1/5 (enterprise-level); global hot spare	Single disk; RAID0/1/5 (enterprise-level); global hot spare
Network Port	1 × RJ45 1000M port; 2 × RJ45 POE 100M ports	1×RJ45 1000M port; 2× RJ45 POE 100M ports
Ports	1 × RS232 for keyboard, 1x Alarm Output	1xRS232 for keyboard, 1x Alarm Output
General Specification		
Power Supply	AC 220–240V; AC 100-130V (optional)	AC 220–240V; AC 100-130V (optional)
Typical/Max Power Consumption	500W/1KW	1KW/1.5KW
Operating Temperature	0°C~+45°C (+32 °F ~ +113 °F)	0°C~+45°C (+32 °F ~ +113 °F)
Dimensions & Weight	3599mm × 1300mm × 1790mm & 1100kg	3901mm × 1790mm × 1865mm & 1400kg
Monitor	2 sets, 21.5" LCD monitor	2 sets, 21.5" LCD monitor
Accessories	Roller table x1/special keyboard x1/mouse x1	Roller table x1/special keyboard x1/mouse x1
Package Dimensions & Weight	2965mm × 1800mm × 2200mm & 1300 kg	2965mm × 2140mm × 2218mm & 1600kg
Operate Table	Package size 1276mm × 376mm × 200mm & 38.5kg	Package size 1276mm × 376mm × 200mm & 38.5kg
Certification	CE-MD, CE-LVD, CE-EMC, FCC, ROHS	CE-MD, CE-LVD, CE-EMC, FCC, ROHS
Warranty	2 years	2 years

Model	ISC-S7408-VHD	ISC-S7408-2VHD
Appearance		
Name	Single-view AI Security Screening Server	Dual-view AI Security Screening Server
Main Features	AI security screening server supports single-view multi-energy security screening machine; Supports 22 kinds of object recognition; Recognizable objects include: guns, fireworks, spray cans, knives, axes, scissors, lighter fluid, nail polish, bottled liquids, glass bottles, thermos bottles, plastic bottles, handcuffs, nightsticks, brass knuckles, lighters, tools, electronic products, mobile phones, power banks, laptops and umbrellas; Recognizable object type increases with software update; Supports storage and export of luggage x-ray images; Supports x-ray inspection machine networking.	AI security screening server supports single-view multi-energy security screening machine; Supports 22 kinds of object recognition; Recognizable objects include: guns, fireworks, spray cans, knives, axes, scissors, lighter fluid, nail polish, bottled liquids, glass bottles, thermos bottles, plastic bottles, handcuffs, nightsticks, brass knuckles, lighters, tools, electronic products, mobile phones, power banks, laptops and umbrellas; Recognizable object type increases with software update; Supports storage and export of luggage x-ray images; Supports x-ray inspection machine networking.
Raid	Supports RAID 0/1/5	Supports RAID 0/1/5
Video In	1 HDMI/VGA/DVI video input	2 HDMI/VGA/DVI video input
Video Out	2HDMI/2VGA/2DVI video output	2VGA/2DVI video output
Supported Security Screening Machine	1 × Single-view	1 × Dual-view
Storage	Up to 4 HDD support RAID5. Video stream, baggage image, alarm stroage	Up to 4 HDD support RAID5. Video stream, baggage image, alarm stroage
Power Supply	120V–240V AC, 35W (without load), 90W (full load)	120V–240V AC, 35W (without load), 90W (full load)
Overall Exterior Size	360mm × 325mm × 132mm	360mm × 325mm × 132.6mm
Packaging & Weight	523mm × 514mm × 330mm & 10.8 kg	523mm × 514mm × 330mm & 10.8 kg
Operating Temperature	0°C~+45°C	0°C~+45°C
RMA Service	2 years	2 years

ENABLING A SAFER SOCIETY AND SMARTER LIVING

Dahua USA

Tel: +1 (949) 679-7777
Email: sales.usa@dahuatech.com
support.usa@dahuatech.com

Dahua Mexico

Tel: +52 55 67231936
Email: sales.mx@dahuatech.com
support.mx@dahuatech.com

Dahua Colombia

Tel: +571 7446110
Email: sales.co@dahuatech.com
support.co@dahuatech.com

Dahua Brazil

Tel: +55 11 32511871
Vendas: comercial.br@dahuatech.com
Suporte Técnico: suporte.br@dahuatech.com

Dahua Perú

Tel: +511 500-8555
Email: sales.pe@dahuatech.com
support.pe@dahuatech.com

Dahua Chile

Tel: +56 232705421
Email: sales.cl@dahuatech.com
support.chile@dahuatech.com

Dahua Argentina

Email: project.ar@dahuatech.com

Dahua Panama

Email: sales.pa@dahuatech.com
Support: support.pa@dahuatech.com

Dahua Thailand

Tel: +66 2541 5188
Email: info.th@dahuatech.com
hr.th@dahuatech.com

Dahua Singapore

Tel: +65 65380952
Email: sales.sg@dahuatech.com

Dahua Turkey

Email: sales.tr@dahuatech.com
support.tr@dahuatech.com

Dahua Malaysia

Tel: +60376620731
Email: sales.my@dahuatech.com

Dahua Indonesia

Tel: +62 811 867 7728
Email: sales.indo@dahuatech.com

Dahua S.Korea

Tel: +82 7081618889
Email: sales.kr@dahuatech.com
support.kr@dahuatech.com

Dahua India

Tel: +91 1244569100
Email: sales.india@dahuatech.com

Dahua Russia

Tel: 8 (499) 682-60-00
Email: info@dahuatech.com

Dahua Kazakhstan

Tel: +7 727 3110838
Email: sales.kz@dahuatech.com

Dahua VISION LLC

Tel: +998 (78) 1488666
E-mail: dh_uzbekistan@dahuatech.com

Dahua UK

Tel: +44(0)1628 613 500
Email: sales.uk@dahuatech.com

Dahua the Netherlands

Tel: +31 (0) 79 799 96 96
Email: sales.benelux@dahuatech.com

Dahua Iberia

Tel: +34 917649862
Email: sales.iberia@dahuatech.com

Dahua Italy

Tel: +39 362182681
Email: sales.italy@dahuatech.com

Dahua Germany

Tel: +49 211 20544121
Email: sales.de@dahuatech.com

Dahua France

+33 1 48 53 70 53
Email: sales.france@dahuatech.com

Dahua CEE & Nordic

Tel: +48 223957400
Email: dh.cen@dahuatech.com

Dahua Poland

Tel: +48 223957400
Email: biuro.pl@dahuatech.com

Dahua SRB

+38 1 (11) 4429999
Email: dh.srb@dahuatech.com

Dahua Denmark

Email: Nordic.ne@dahuatech.com

Dahua Hungary

Tel: +36 17899852
Email: sales.hu@dahuatech.com

Dahua Bulgaria

Tel: +35929950013
Email: support.bg@dahuatech.com

Dahua SRL

Email: marketing.ro@dahuatech.com

Dahua Czech

Tel: +420 225 986 001
Email: admin.cz@dahuatech.com

Dahua S. Africa

Email: sales.za@dahuatech.com

Dahua Australia

Tel: +61 299285200
Email: sales.oc@dahuatech.com

Dahua Middle East

Tel: +971 48815300
Email: sales.me@dahuatech.com
info.me@dahuatech.com

* Design and specifications are subject to change without notice.

Ver. 1, Jul. 2021

DAHUA TECHNOLOGY

No.1199 Bin'an Road, Binjiang District, Hangzhou, China. 310053
Tel: +86-571-87688883 Fax: +86-571-87688815
Email: overseas@dahuatech.com
www.dahuasecurity.com

